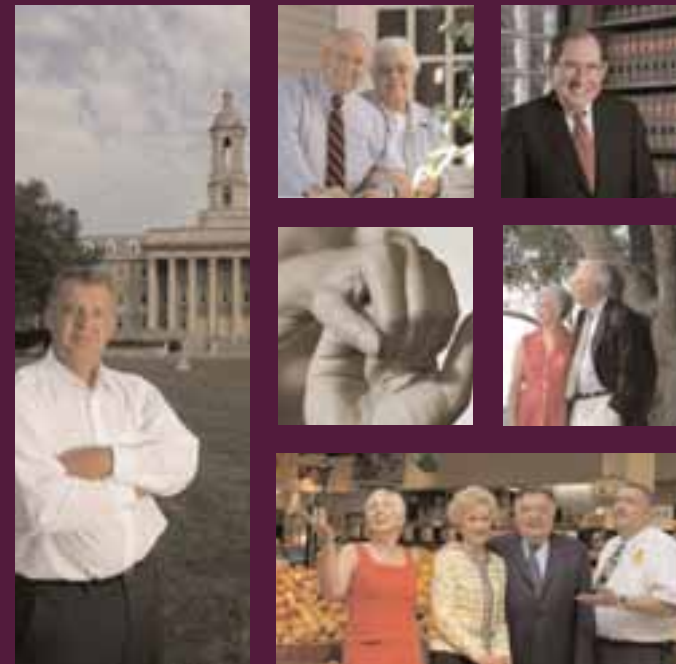


The Faces of Philanthropy



2005 – 2006 REPORT

GEISINGER
REDEFINING BOUNDARIES™



A NOTE OF THANKS



Dear Friend of Geisinger,

When I arrived here more than five years ago, Geisinger's promise was evident. Its history, talented and dedicated employees, dynamic infrastructure, and tremendous commitment to the residents of Central and Northeastern Pennsylvania were all qualities that indicated Geisinger was poised for an even brighter future. Geisinger's attributes matched my desire to expand, enhance and elevate healthcare services for the people we serve.

I am happy to report that Geisinger continues to meet the challenge of providing the highest quality care to our patients and members. In the past year, for example, we've cared for more people than ever before, acquired a hospital that will help us expand our services in the northeastern part of the state, and enhanced our research and education capabilities. And there's so much more.

As I reflect upon these and other accomplishments, I must recognize the contributions of our donors. Indeed, the level of philanthropic support from new and old friends, foundations and corporations is higher than it has been in many years. It is through your support for all of our programs -- from pediatrics to geriatrics -- that we are able to continue to fulfill the promise I recognized upon my arrival.

The Geisinger family is committed to enhancing the quality and level of services we offer to you, your family and your neighbors. With your help, we have made and will continue to make a difference in the lives of the people we serve.

It is, therefore, with gratitude that we present this report.

Sincerely,

Glenn Steele, Jr., MD
President and CEO



THE POWER OF PHILANTHROPY



Your gifts are assuring that Geisinger Health System continues to provide the best, most advanced healthcare for the people of our region.

2

During the past year, more than 12,000 individuals, corporations, organizations and foundations made gifts and grants totaling \$11,006,243. Your support made an immediate impact and will benefit millions of Geisinger patients far into the future. Voluntary gifts strengthened nearly every aspect of our service to the people of our region. Examples of support include:

- Annual gifts made directly to Geisinger or through Children's Miracle Network help our patients immediately by underwriting expenses such as Life Flight®, nursing education and the gap between the cost of medical care and what many of our neighbors can afford to pay.
- Endowment gifts assure future medical care by providing permanent funds to support and expand essential services, research, training of medical residents, and education for nurses. Many of our supporters are helping to build our endowment through planned gifts, which enable them to make substantial commitments to supporting our mission while increasing the benefits they receive from their hard-earned financial assets during their lifetimes.
- Gifts given for capital purposes continue to help ensure that the most sophisticated equipment, technology and facilities continue to benefit our patients, often close to their local communities. One striking example of capital dollars at work is the construction on the Danville campus for the Center for Health Research.

Everyone at Geisinger – our trustees, volunteers, doctors, nurses, and staff – is committed to meeting the healthcare needs of more than two million residents in the 40 counties of Central and Northeastern Pennsylvania. The quality of our healthcare teams and our investments in advanced healing technologies have earned Geisinger high national rankings.

We serve all the people of our region regardless of their financial circumstances, insurance coverage or their ability to pay. In addition, we offer medical specialties and services because people in our region need them, even when medical insurance will not reimburse their full costs. We are committed to conducting a broad research program and helping to shape healthcare policies.

But providing the best, most comprehensive healthcare across our region costs more than we could hope to finance through revenues alone. Only philanthropic support can sustain our commitment to quality, innovation and specialized services. Thanks to the investment of many gifts – large and small – Geisinger can provide the best, most advanced healthcare when you, your family and your community need it.



*Thanks to the investment of many gifts –
– large and small –
Geisinger can provide the best, most advanced
healthcare when you, your family and
your community need it.*

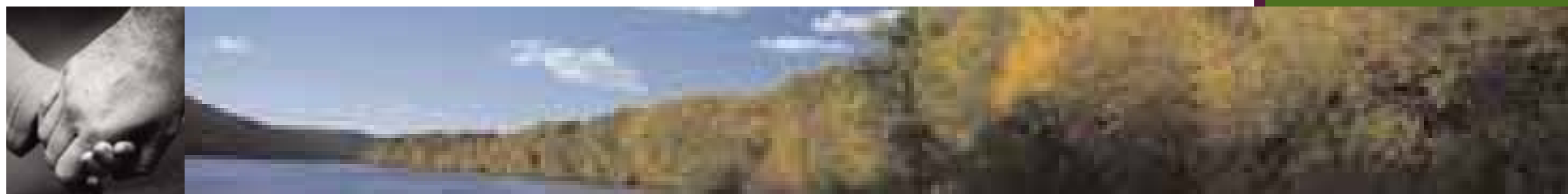


FITZ AND MARY JANE WALLING

Mr. and Mrs. Walling are community leaders by any definition. The Lewisburg residents have a long and valued history with Geisinger. What began as a modest response to an annual appeal in 1981 has grown into an increasing level of commitment and support through Geisinger's Annual Fund.

"We give in order to say thank you," Mr. Walling says. "We love this community and believe Geisinger is part of what makes this area such a wonderful place to call home. Geisinger has been our healthcare provider for more than 50 years. Both our children were born at Geisinger Medical Center, and we have always been grateful for the excellent care we have received."

The Wallings have demonstrated their appreciation for Geisinger by directing gifts each year, for 25 years, to support a variety of programs and services. Their philanthropy has supported Life Flight®, women's health, dermatology, cardiology, House of Care, and pediatric services. In addition to these annual gifts, the Wallings have also established a gift annuity to support the renovation of the Janet Weis Children's Hospital.





PHYSICIANS AND SENIOR LEADERS GIVE GENEROUSLY

Physician Campaign Steering Committee

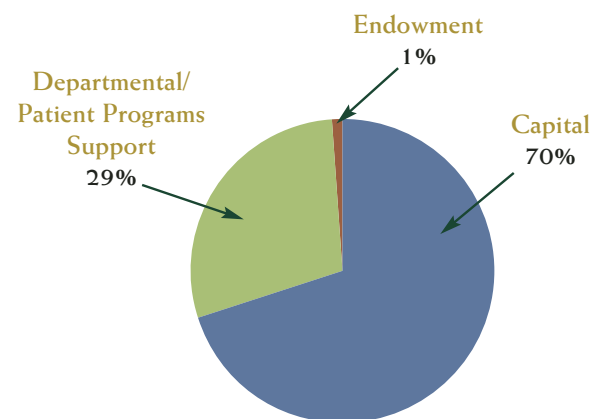
Joseph J. Mowad, M.D., Chair
 Charles H. Benoit, M.D.
 Albert M. Bernath, M.D.
 Eric J. Bieber, M.D.
 David C. Bush, M.D.
 David J. Carey, Ph.D.
 Alfred Casale, M.D.
 Linda M. Famiglio, M.D.
 Jeffrey Folk, M.D.
 David P. Franklin, M.D.
 Sue Hallick, RN
 Bruce H. Hamory, M.D.
 Jonathan P. Hosey, M.D.
 Matthew C. Indeck, M.D.
 Victor J. Marks, M.D.
 Francis J. Menapace, Jr., M.D.
 O. Fred Miller, III, M.D.
 Michael E. Ryan, D.O.
 Walter Stewart, Ph.D.
 Dennis Torretti, M.D.
 Frank Trembulak, EVP, COO
 Gary Wolfgang, M.D.
 Edward Woods, M.D.

The Physicians and Senior Leaders Campaign, chaired by Joseph Mowad, M.D., raised \$1.65 million for Geisinger in 2005- 2006. Physicians and senior leaders responded enthusiastically to the opportunity to assure that Geisinger continues to advance healthcare, research and education.

Thanks to the work of a Steering Committee comprised of physician and senior leaders, the campaign achieved a record participation rate of 80 percent for senior leaders and physicians at Geisinger Medical Center and Geisinger Wyoming Valley.

"To all the physicians and administrators who chose to respond to our invitation, we extend sincere appreciation for the dedication and service to our health system," Dr. Mowad said. "The patients we serve directly benefit from this generosity."

PHYSICIAN/ADMINISTRATION COMMITMENTS BY DESIGNATION



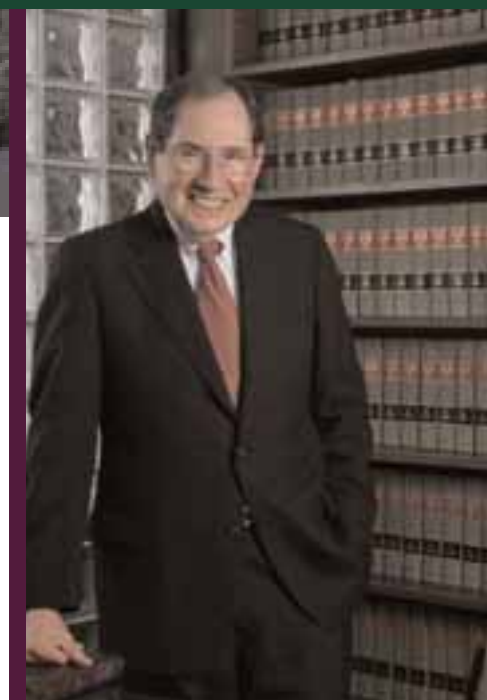
ANNUAL GIFTS AT WORK

Those who make annual gifts have an immediate impact on the quality of healthcare delivered to the people of our region, every day.

Every day, thousands of Geisinger patients, their families and their communities benefit from the services and programs supported by annual gifts. The Foundation is grateful that more than 3,800 new annual giving donors joined in support in 2006. Examples of the benefits that the new donors helped to fund are:

- Geisinger's only air medical transport service, Life Flight®, which speeds patients facing medical emergencies by helicopters to the accredited Regional Resource Trauma Center in Danville.
- Continuing education for our nurses, which are critically important for keeping nurses abreast of advances in their specialties.
- The Marworth Gift of Hope fund, which underwrites the expenses of those who need care but lack the insurance coverage or resources to pay for treatment.
- Medical specialty practices in the Wyoming Valley and Centre County to extend the most advanced healthcare to citizens throughout our region.

It takes many gifts – large and small – to enable Geisinger to provide the best healthcare across the 20,000 square miles of our region. Those who make annual gifts have an immediate impact on the quality of healthcare delivered to the people of our region, every day.



EUGENE (GENE) AND CONSTANCE ROTH

Mr. and Mrs. Roth invest in Geisinger, just as Geisinger invests in the Wilkes-Barre community. "Whenever anyone in my family needs care, we go to Geisinger," Mr. Roth says.

Mr. Roth's father was a member of the Board of Trustees of Wyoming Valley Hospital – the predecessor of Geisinger Wyoming Valley Medical Center. Today, Gene chairs Geisinger's Eastern Region Advisory Board. "Many people in my region are still surprised to see how much Geisinger has invested to strengthen cardiology, cancer and other specialty care in our communities," states Mr. Roth.

Long-time supporters of Geisinger, the Roths most recently made a gift to support the Heart Hospital at Geisinger Wyoming Valley Medical Center, in memory of one of their sons, Lawrence.

"Gene and I want Central and Northeastern Pennsylvania to have the best healthcare possible," said Mrs. Roth. "What Geisinger brings to our communities is invaluable to our health, our quality of life and for prosperity. We're committed to staying involved with Geisinger."

GEISINGER DONATIONS 1915 – 2004

1915
 Founding Gift
 Abigail Geisinger

1926
 Lister stone & bricks for Surgical Building
 Western Institute, Glasgow, Scotland

1923+
 Crippled Children's Clinics
 Rotary Club, State of PA, Montour,
 Columbia, Northumberland and Union
 Counties

1939
 \$500 for treatment of crippled children
 from needy families
 Estate of Mrs. Charles Francis, Riverside

1941
 Approx. \$4,600 for iron lung
 Mt. Carmel American Legion
 Community Fund

1944
 \$350 for hot pack apparatus to treat
 infantile paralysis patients
 Montour Co. Chapter, National
 Foundation for Infantile Paralysis

1944
 Services of extra nurse to care for infantile
 paralysis patients during fall epidemic
 Montour Co. Chapter, National
 Foundation for Infantile Paralysis

1946
 \$100,000
 Charles S. Woolworth

Snapshots from the history of medical care in our region can be seen in the time line listing examples of the thousands of gifts made since 1915 to Geisinger Medical Center by individuals, businesses and corporations, civic organizations and foundations.

1947-49
 Pledges for construction of Foss Clinic
 Hundreds of individual donors, regional
 businesses, civic organizations, and
 Geisinger employees

1954
 Purchase of miniature chest X-ray machine
 Local chapters of American Cancer
 Society and Tuberculosis Society

1955
 \$200 Nursing scholarship
 Danville Rotary Club

1955
 \$134,400 grant
 Ford Foundation

1958-1959
 \$3,235 Dr. Henry F. Hunt Memorial Fund
 Anonymous donors

1958
 Two scholarships
 In honor of Mary Jane Cantwell,
 Milton's 1st community nurse

1958
 \$6,800 research grant to George Weinbaum,
 Ph.D., biochemist, for cancer research project
 Damon Runyon Memorial Fund for
 Cancer Research, NYC

1959
 \$10,000 to Foss Clinic Expansion
 Milton Steel Division,
 Merritt-Chapman & Scott

continued



MIRACLES ACROSS OUR REGION

"For more than two decades, Children's Miracle Network at Geisinger has been here for the children of our communities."

Dear Friend of Geisinger,

For more than two decades, Children's Miracle Network at Geisinger has been here for the children of our communities. With the support of our donors, we helped build Geisinger's remarkable Janet Weis Children's Hospital, which now is celebrating its 12th year. The same generosity also has helped expand our specialty medical care across Northeastern and Central Pennsylvania; Janet Weis Children's Hospital pediatric care now is available in communities from East Stroudsburg to Altoona.

By funding state-of-the-art equipment, educational programs and valuable services at the children's hospital and throughout the region, Children's Miracle Network has ensured – and continues to ensure – that quality care is available when and where kids need it.

6

Thousands of children – including our friends, families and neighbors – now are being treated through Geisinger pediatrics. Several amazing stories, "miracle kid" stories, are shared each year through Children's Miracle Network. The donations we receive help perpetuate these stories of health, survival and hope.

We're grateful to have such devoted supporters who help us continue this tradition throughout the years, and we're honored to offer the best care available to the children in our region.

Sincerely,

Dr. Michael Ryan, D.O.
Chairman, Pediatrics
Children's Miracle Network at Geisinger



Miracles at Work



The new bi-plane cardiac catheterization lab.

Children's Miracle Network at Geisinger helps make miracles happen every day across Geisinger Health System. Pediatric specialty services are available at Janet Weis Children's Hospital, Geisinger Wyoming Valley, and at 18 community practice sites in our 32-county coverage area. Children's Miracle Network has raised more than \$33 million for pediatric services, equipment and programs at Geisinger Health System since 1984.

Those funds have helped Geisinger consistently provide exceptional pediatric care. Recent donations have brought the latest technology to Janet Weis Children's Hospital, including a new bi-plane cardiac catheterization lab. This \$1.7 million project was partially funded by Children's Miracle Network and has benefited many children who are seen by Geisinger cardiologists for diagnosis and treatment of heart problems.

7

Children's Miracle Network dollars also allowed Janet Weis Children's Hospital Pediatric Services Unit at Geisinger Wyoming Valley to purchase state-of-the-art monitors and add a play deck, helping to keep the unit up-to-date while allowing patients to "just be kids."

Complex pieces of medical equipment – as well as items such as scales and exam tables – also are funded for Geisinger Medical Groups and Pediatric Specialty Services offices in communities across the region.

Children's Miracle Network funds go beyond the doctors' offices as well. Donations also are used to support specialized services and programs, such as camps for children with cancer, spina bifida, autism and many other illnesses or disorders.



Children's Miracle Network at Geisinger helps make miracles happen every day across Geisinger Health System.

1960
\$14,578 towards Robert H. Keiser Memorial Fund
Geisinger employees

1960
\$71,120 towards Robert H. Keiser Memorial Fund
Medical Staff

1960
Foss Clinic Expansion
Numerous individual donors, regional businesses, and civic organizations

1960
\$587 for purchase of ultraviolet microscope to assist in detection of cancer
Northumberland Co. Unit, American Cancer Society

1960
Construction of Youth Pavilion
Sordani Foundation

1961
\$500,000 grant for Frucauff Foundation
Center for Roentgenology, Radiation Therapy & Nuclear Medicine
Charles A. Frucauff Foundation, Inc., NYC

1962
Bronchospirometer and Van Slyke gas analysis instrument for Lung Function Lab
Montour Co. Tuberculosis and Health Committee

1962
Gifts for Artificial Kidney Unit
Chatter Club, Central PA business & civic leaders, Merritt-Chapman and Scott Foundation

1962
Gift for scintillation scanner
Montour Co. Unit, American Cancer Society

1963
Support for soft tissue studies to reveal early-stage small breast tumors
Montour Co.-Riverside Unit, PA Division, American Cancer Society

1964
\$1,172 for Burn Treatment Unit
GMC Auxiliary

1966
\$2,500 toward Accident & Health Unit
Meyer-Ceco Foundation, Milton Mfg. Co.

1967
\$5000 toward new ER
GMC Auxiliary

1967-68
Gifts to building fund
TRW, Shroyer Dress Co., PA Gas & Water Co., Geisinger employees

1968
Support for continuing education program for physicians
Merck Post Graduate Education Foundation

1968
\$4,500 grant to expand birth defects studies
National Foundation March of Dimes

1968
Gift for Day Hospital
D. Edward Edmondson, in name of wife

1969
\$20,000 for Radiological Training Program
Gulf Oil Corp.

continued



ENDOWMENTS STRENGTHEN GEISINGER'S PROGRAMS FOREVER

Seven new endowments established during the past year will forever strengthen patient care, research and programs at Geisinger.

Endowments provide a perpetual stream of financial support for Geisinger's programs because the endowment gift remains invested forever. Each year, a portion of the endowment's earnings support programs designated by its donors; the remaining earnings are reinvested so that the endowment's value will not be eroded by inflation. Donors who make endowment gifts create a legacy that permanently sustains the programs they choose to support.

Opportunities for endowment giving begin at \$25,000. Depending on the programs donors choose to support, individuals may establish new endowments or add to existing funds. Endowment giving offers donors the opportunity to name funds in honor of family members, beloved doctors, mentors or others.

Endowment giving is critically important to guaranteeing the future of healthcare in our region. Geisinger's endowment value of \$83 million is less than half the average for the nation's leading medical centers. Our goal is to increase the value of our endowment to the national average within five years.

8

MAJOR MEDICAL CENTER ENDOWMENTS COMPARED (2004 MARKET VALUES)

| | |
|-------------------------------------|---------------|
| Partners HealthCare | \$727 million |
| Mayo Clinic | \$519 million |
| Children's Hospital of Philadelphia | \$205 million |
| Cleveland Clinic | \$202 million |
| Lahey Clinic | \$120 million |
| Geisinger | \$ 83 million |

The Foundation gratefully acknowledges the generosity and foresight of endowment donors in 2005-06.

Funds Established During Fiscal Year 2006

The Horace W. Goldsmith Foundation Endowment

Established March 2006 by

The Horace W. Goldsmith Foundation

New York, NY

Robert and Doris Kinsley Otolaryngology Endowment

Established March 2006 by

Mr. and Mrs. Robert Kinsley

Stroudsburg, PA

David R. and Lyne H. Maneval Endowment

Established November 2005 by

Dr. David Maneval

State College, PA

In Memory of His Wife, Lyne Heisley Maneval

John Parenti, M.D. Annual Visiting Orthopaedic Surgery Lectureship

Established June 2006 by

Arturo and Nina Porzeczanski

New York, NY

In Honor of Dr. John Parenti

Robert Walker, M.D. Annual Resident Research Symposium

Established 2005 by

Friends and Colleagues

Danville, PA

Robert and Helen Golder Endowment

Established in 2005 through the Estate of Robert Golder

Venice, FL

The Helen Huber Geriatric Medicine Endowment

Established in 2005 through the Estate of Helen Huber

Scranton, PA



DR. FRED AND MARY JO JONES

Dr. and Mrs. Jones describe themselves as a couple that "like to give," but give quietly. "Discussing our giving is a departure for us," Dr. Jones says, "but Mary Jo and I believe that it is important to let others know why we donate to Geisinger."

Their dedication to Geisinger began in 1965, when, after a nine-year stint in the Air Force Medical Corps, Dr. Jones and his family moved to a farm outside of Danville. As a physician, he appreciated the commitment to delivering care without turning anyone away, and to the "institutional pride that carries through to all levels of the organization.

"At Geisinger, I was able to advance my department," reflects Dr. Jones. "I like Geisinger's determination to stay at the forefront of the medical profession."

After raising five children, three of whom are also in the medical field, Dr. and Mrs. Jones say they feel proud to be a part of Geisinger and are glad that it has played a huge part in their lives. "Our family received all our medical care at Geisinger, and we wouldn't think of going anywhere else," Mrs. Jones says.

Dr. and Mrs. Jones have funded a charitable gift annuity in support of the Chairman of Medicine Fund. The annuity provides them with income and tax advantages while helping to support the health system. "We're pleased to be able to provide something in return for Geisinger's influence on our lives," Dr. Jones says.

1969
\$1,400 for Genetics Evaluation Center
Montour Chapter, National Foundation
March of Dimes

1969
\$1,600 for postgraduate education of
physicians in 5-county area
Merck, Sharp & Dohme Post-Graduate
Program

1969
\$50,000 for main lobby of new wing
Joseph E. Kennedy Foundation

1969
\$56,500 towards purchase of 4-million
electron volt linear accelerator
Charles A. Frieauff Foundation, NYC

1969
\$17,298 grant for 4-wk. training program
in coronary care for 20 nurses from
nearby hospitals
Susquehanna Regional Medical Program

1969
\$4,950 grant to study arthritis in
Central PA Arthritis Foundation

1969
\$1,000 for building fund
Geisinger Nurses Alumni Association
1972
\$2,500 to support Radiological Physics
Program (cooperative effort with Bucknell
University)
Gulf Oil Foundation

1973
\$10,000 grant for heart research
Fraternal Order of Eagles Max Baer
Heart Fund

1973
3-room ICU for treating burn patients
Mr. & Mrs. Harold M. Soars, Muncy

1974
\$118,047 to institute a health
education system
Susquehanna Valley Regional Medical
Program

1974
\$1,000 for building fund
International Brotherhood of Electrical
Workers, Local 607, Shamokin

1974
\$7,000 for construction of rehabilitation
medicine facility
Ford Motor Co. Fund, on behalf of
Pbilco-Ford employees

1975
\$34,190 grant for establishment of family
planning services to persons of low income
Family Planning Council of South
central PA

1975
\$3,000 grant for support of Genetics
Evaluation Center
Susquehanna Valley Chapter, National
Foundation-March of Dimes

1975
\$70,000 grant for construction of
Rehabilitation Medicine Center
Kresge Foundation

continued



ABIGAIL GEISINGER CIRCLE RECOGNIZES PLANNED GIFTS

More than 91 years ago, Abigail Geisinger displayed extraordinary vision and generosity in founding her hospital.

Her challenge to us is to sustain that vision and nurture the generous spirit of others so that her hospital can provide the best, most advanced medical care today and tomorrow, as it did in 1915. Geisinger Foundation established the Abigail Geisinger Circle to recognize and honor those who, through compassion and planning, will help sustain Geisinger well into the future. Fourteen new members were welcomed into the Circle in the past year.

Gift planning can preserve or enhance the value of donors' estates, provide immediate tax benefits to the donors, and enable them to leave a larger legacy of support than would be possible through an outright gift of cash or other assets. In a recent national survey, 35 percent of all gifts to charitable institutions were planned gifts.

Gifts planned through wills, life income arrangements or life insurance can provide for the future security of both the donor and Geisinger. In the years ahead, gift planning will become even more critical to sustaining Mrs. Geisinger's dream to serve the people of our region.

10

Abigail Geisinger Circle Members

- | | |
|--|---------------------------------|
| Mr. and Mrs. William D. Beecham | Mrs. Mary M. Halloran |
| Mr. Phil Broadhead | Mr. and Mrs. Raymond E. Hodrick |
| Ms. Margaret L. Bryan | Mrs. Anna Fae Hunsinger |
| Mrs. Florence K. Butler | Mrs. Mary James |
| Mr. Joseph H. Butler | Dr. and Mrs. Frederick L. Jones |
| Mrs. Margaret S. Clinger | Mr. and Mrs. Norman A. Kerr |
| Mr. Donald A. Crownover | Dr. and Mrs. David W. Kistler |
| Dr. Donald Egan and Dr. Gillian Hollands | Mr. William T. Kostas |
| Mr. Albert T. Fecko | Mrs. Nancy T. Kough |
| Mr. Chester E. Grannas | Ms. Ramona B. Krupa |



Abigail Circle continued

- Dr. and Mrs. George W. Leighow
- Mrs. Susan W. McDowell
- Mr. Bruce Noga
- Mr. Walter M. Pasternak
- Mrs. Gladys I. Patterson
- Mr. Thomas J. Patterson
- Mr. and Mrs. Arthur M. Peters, Jr.
- Mr. Wolfram J. Potrykus
- Mr. and Mrs. Dale E. Ranck, Jr.
- Mr. and Mrs. Allen N. Rider
- Mr. and Mrs. Walter M. Schell
- Dr. and Mrs. Gary A. Sojka
- Ms. Mary Jane Stevenson
- Mr. Harry Strouse
- Mrs. Jane Tabler
- Mrs. Helen A. Wagner
- Mr. and Mrs. Ray S. Walker
- Mr. Fitz R. Walling
- Mrs. Alice Woodring
- Mr. and Mrs. John J. Youskites
- Mr. L. A. "Pat" Zimmer



DAVID STINEBRING, PHD

Dr. and Mrs. Stinebring, longtime residents of Huntingdon, Pennsylvania, enjoyed life in their Central Pennsylvania community. Carole taught school for 15 years and enjoyed gardening. For more than 30 years David worked on applied research projects at Penn State University. Three years ago, their lives changed forever.

After losing his wife to heart disease at the age of 57, Dr. Stinebring decided to support women's heart health by creating a special fund that supports a women's cardiovascular education program.

"After Carole's death I developed an interest in heart disease, and especially as it affects women. I learned that researchers have started to study the differences in heart disease between men and women. This is why I was so excited to hear about the Geisinger program, and decided to provide significant support for it."

Through Geisinger's new women's heart disease program, women will learn how to recognize symptoms and when to seek medical attention. Physicians will learn how to recognize the unique symptoms of women's heart disease and prescribe appropriate medical treatment. Geisinger promises to be a leader in addressing health issues of women.

1975

\$12,000 grant for Ophthalmology Department's clinical research
Knights Templar Eye Foundation

1976

\$124,071.50 for Main Lobby & reception area of Foss Clinic East
Joseph E. Kennedy Foundation

1976

\$10,000 for Cardiovascular Department
Fraternal Order of Eagles Lodge

1976

\$26,500 grant to purchase Automated Vitreolome M-5 for Ophthalmology Department
Knights Templar Eye Foundation

1977

\$34,980 grant for PICU
Susquehanna Valley Chapter, National Foundation-March of Dimes

1978

Gifts for Dickey Clinic construction
Kennedy Van Saun, TRW,
Northeastern Bank

1981

\$100,000 grant for electron microscope
Pew Memorial Trust

1981

\$325,000 for _ purchase cost of Marworth estate
Scranton family

1981

\$40,000 for purchase of Fred Diehl house for use as Ronald McDonald House
Ray Kroc Foundation and McDonald operators

1982?

\$10,000 for Cardiac Care Unit
Kawneer Co., Inc., Bloomsburg

1982

\$385,000 for Marworth Alcohol Treatment Center
Pew Memorial Trust

1984

\$320,000+ raised for Pediatrics
Children's Miracle Network Telethon

1984

\$4,000 for Pediatric Cardiology Balloon Valvotomy equipment
PA Kiwanis Foundation

1985

\$10 million for research building
Janet & Sigfried Weis

1986

\$266,248 to develop Physician Management Education Program
Robert Wood Johnson Foundation

1986

\$200,000 for Brian and Blanche Teats Memorial Fund for NICU
Will of Blanche Teats

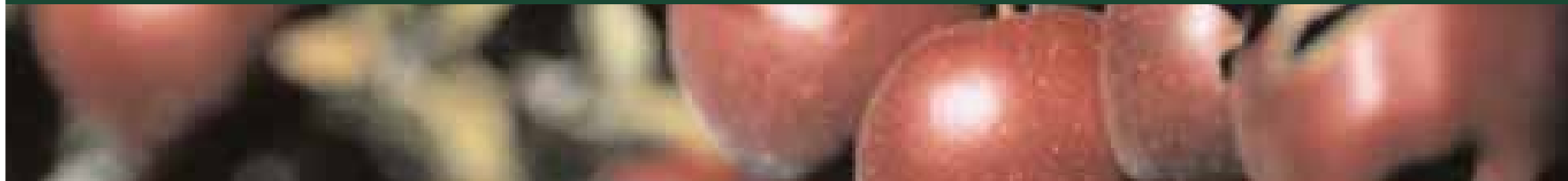
1986

\$100,000 for Kiwanis Children's Heart Program
PA District of Kiwanis International

1986

\$2,000 to establish Edith Brown Neurophysiology Fund for treatment & research of ALS
Robert Brown, Sr.

continued



BEQUESTS ESTABLISH LEGACIES

Newly established endowments will provide income in the years ahead for clinical areas.

Bequests received during the past year supported a wide range of Geisinger programs. Some bequests specified support for cancer services, cardiology, geriatric medicine and capital improvements at Geisinger Medical Center. Still others created endowments that will continue to provide income in perpetuity. Some of the newly established endowments will provide income in the years ahead for clinical areas like pulmonary medicine, ophthalmology, and research.

The Foundation gratefully acknowledges the following bequests:

Estate of Arvilla J. Arnold
In support of the Center for Health Research

Estate of Helen Huber
Endowment for geriatric medicine and research

Estate of Sarah M. Boyer
To support the Ophthalmology Department

Estate of Mary Lou Johnson
To support cardiology and pediatric cardiology

Estate of Robert T. Golder
Endowment for Pulmonary Department

Estate of Wilhelmina Lipfert
To support cancer services

Estate of Edward Halfmann
To support priority needs

Estate of Mary Jane McCleary
To support hospice services

Estate of Dorothy M. Hassert
To support priority needs at Geisinger Medical Center

Estate of John Nicholson
To support women's health program

Bequests continued

Estate of Florence E. Pleibel
To support Children's Miracle Network

Estate of Lucy A. Schlamb
To support priority needs at Geisinger Medical Center

Estate of Kathryn M. Smith
To support priority needs at Geisinger Medical Center

Estate of Wilma F. Steel
To support priority needs at Geisinger Medical Center

Estate of Marie Washko
To support hospice and oncology services

Estate of Lucy Wolfgang
To support women and children's programs



ROBERT AND DORIS KINSLEY

Daughter Dee Dee (left) and son Christopher (right).

Mr. and Mrs. Kinsley, recent endowment donors to Geisinger's Department of Otolaryngology, chose to support Geisinger so they could acknowledge the outstanding care they received as patients.

"We respect the physicians both in otolaryngology and at the Janet Weis Children's Hospital, where our grandson Robbie was treated a few years ago," Mrs. Kinsley says. "The physicians at Geisinger are both thorough and compassionate — they have it all."

Lifetime residents of the Tannersville area who recently celebrated 50 years of marriage, Mr. and Mrs. Kinsley assumed ownership of the family grocery store, Kinsley's Market, started by Bob's father in the early 1950s. The Kinsleys still look to the future: they plan to open a large, more modern market in 2007.

The Kinsleys have spent most of their lives volunteering, leading and supporting civic and community organizations. "By supporting Geisinger," says Mr. Kinsley, "we hope to insure the future of healthcare in Northeastern and Central Pennsylvania. We want to do our part to make sure that Geisinger provides the best care for our family and neighbors for generations to come."

12

DONATING ONLINE IS CONVENIENT AND EASY

Through Geisinger's Web site, you can make a gift to support any area of the health system anytime from the convenience of home. All you need is a credit card and a willingness to help Geisinger provide the best, most advanced healthcare for the people of our region.

Giving online is easy. Just visit the Geisinger home

page at <http://www.geisinger.org>. Click on the "Patients & Visitors" block on the right side of the page. On the "Patients & Visitors" page, click on the "Philanthropy" link in the blue box in the left margin of the page. This link takes you to Geisinger Foundation Web pages, where you can review the

ways that gifts support Geisinger's mission. The link, "Donate online" connects to a form for making your gift and receiving a receipt for your tax-deductible contribution.

1986
Verneda A. Wachter Endowment in Oncology
Estate of Leo J. Wachter, Altoona area
1986-1987
\$175,000+ for Kivwanis Children's
Heart Program
PA District of Kivwanis International
1988
\$30,000 to new Ronald McDonald House
McDonald's Championship LPGA

1988
\$248,000+ for Kivwanis Children's
Heart Program at GMC
PA District of Kivwanis International
1988
\$100,000 for Nicholas Wolff Endowment
Fund towards Camp Victory
Dennis Wolff

1988
\$1.25 million for new Ronald McDonald House
Many regional donors
1989
\$400,000+ for Kivwanis Children's
Heart Program at GMC
PA District of Kivwanis International

1991
2 cartoon videos to Pediatrics Unit
Mrs. Lane Snavely's 1st grade class, Lewisburg
1991
\$10 million for Children's Hospital
Siegfried Weis
1991
\$50,000 pledge to Children's Hospital
Central Susquehanna Valley Board of Realtors

1991
\$340,000 grant to underwrite work of
Dr. Kenneth Baker
American Heart Association
1991
\$25,000 pledge to Children's Hospital
Textron, Inc.

1991
\$100,000+ pledges to Children's Hospital
project
Dr. Hess Wertz & wife Paula
1984-1993
\$1,000,000+ raised & \$500,000 pledged to
Kivwanis program
PA District of Kivwanis International

1994
\$10,000 pledge to Children's Hospital
LINICO, Berwick Chapter
1994
Jacobs Ophthalmology Fund
Clyde H. Jacobs, M.D., in memory of his
2 sons, Clyde H., Jr. & Gerald J., M.D.
1994
\$25.6 million to build Children's Hospital
Donors

1995
Mural outside PICU in Children's Hospital
Karen Ross, Lewisburg artist
1995
Gift to launch bone marrow transplantation
program
Charles B. Degenstein

continued



A VISION FOR HEALTHCARE IN OUR REGION

We need your help to continuously innovate the best, most advanced healthcare for the people and communities in our region.

For more than nine decades, Geisinger has delivered excellent healthcare to the people of Central and Northeastern Pennsylvania. As Geisinger approaches its second century of service, our vision for the future encompasses the same dedication and passion that founder Abigail Geisinger expressed when she declared, "Make my hospital right. Make it the best."

The people of our region deserve the best, most advanced healthcare. The investment of gifts assures that Geisinger can provide you, your family and your neighbors with the quality of care you deserve, far into the future.



To assure the future of healthcare in our region, Geisinger has identified eight priorities for voluntary gift support:

CANCER SERVICES

We seek to consolidate services in the Knapper Clinic to provide patients with non-surgical cancer care in a single location, to provide the latest technology and to endow specialist positions in multidisciplinary clinics.

CARDIOVASCULAR CARE

We intend to invest in services across our region that improve our diagnostic and treatment capabilities, support small and rural hospitals in their efforts to improve the diagnosis of heart disease and build upon our success in interventional cardiology and cardiac surgery.

PEDIATRIC CARE

With your support, we will enhance the Janet Weis Children's Hospital and extend its services in Wilkes-Barre.

NEUROSCIENCES

We seek to keep our services on the leading edge of this field of medicine wherein knowledge is expanding exponentially. With your help, we will invest in the latest diagnostic and treatment technologies and a robust research program for the benefit of patients who suffer from brain cancer, Parkinson's, Alzheimer's, epilepsy, stroke and other disorders of the central nervous system.

SURGERY AND TRAUMA

We will provide the people of our region with the best emergency transportation to the closest trauma center, expand our capabilities in organ transplantation, provide the latest in robotic surgery capabilities and develop a Center for Injury Prevention.

WOMEN'S HEALTH

We seek to meet the demand for healthcare services for women by expanding the Women's Pavilion, providing the latest diagnostic and treatment technologies and support the work of obstetricians throughout our region through telemedicine.

ALCOHOL AND CHEMICAL DEPENDENCY

We need your help to enable Marworth to provide its nationally recognized recovery services to more people who are fighting alcohol and chemical addictions. Marworth needs to expand its facilities, therapies and family services.

THE CENTER FOR HEALTH RESEARCH

We are committed to conducting research into aging, genomics and treatment outcomes; conducting clinical trials; and helping to formulate health policies and delivery models to benefit rural populations. We seek capital, endowment and current use gifts to build, staff and operate the Center for Health Research in Danville.

Innovation is costly. We need your help to continuously innovate the best, most advanced healthcare for the people and communities in our region. We have advanced so far because of the generous support of the donors listed in this report, and the generations of supporters who preceded them. With your support, we can meet the healthcare challenges that lie ahead.

1995
\$400,000 grant for telecommunications/telemedicine
Bell Atlantic

1996
The Sigfried Weis Research Endowment
The Sigfried Weis Children's Hospital Fund
Established through the estate of Sigfried Weis

1997
\$100,000 gift to the Urology Fund
Marion F. Pollock

\$500,000 to the Mahanoy City Clinic Fund
Herman Yadacufski

1998
Camp Jelly Beans Endowment to provide support for children's specialty camps.
Mr. Michael Caputo

1999
\$1,500,000 for Women's Center renovation
Charles B. Degenstein Foundation

1999
\$850,000 for Women's Center renovation
Thelma Fisher

1999
\$107,080 for Geisinger Medical Center unrestricted
Laura Welker Young

2001
Ann P. Balz Memorial Endowment Fund to support Janet Weis Children's Hospital.
Joseph W. Balz

2002
Dirk Sojka Memorial Endowment to support pediatric cardiology
Established by Family and Friends

2002
Robert K. and Sandra S. Metz Endowed Nursing Award
Established by Robert and Sandra Metz, Belleville, Pa.

2003
McDowell Place Therapy Garden
Jack and Susan McDowell

2003
Charles and Marjorie Ward Endowment for Cancer Care and Research
The Ward Family Foundation, Bethesda, Maryland

2003
Named a floor in the Heart Hospital at Geisinger Wyoming Valley Medical Center
Augie and Emma Simms

2004
Mowad Endowment for New Discoveries (MEND) Fund
Established to honor Joseph Mowad, M.D., by Friends and Colleagues