

# COMMUNITY HEALTH CONNECTIONS

THE BANTAM COMMONS  
120 HOLLYWOOD DR., SUITE 201  
BUTLER, PA 16001

PHONE: (724) 283-0990  
FAX: (724) 283-1012



Visit us online at [www.hcqu.org](http://www.hcqu.org)

The screenshot shows the homepage of the Community Health Connections website. At the top, there is a green banner with the organization's name and logo. Below the banner, there are several sections: a search bar, a 'Technical Assistance' section with a list of services, a 'Training' section, a 'What's New?' section with a small image, and a 'Upcoming Special Events' section with a table. The table lists events such as 'Health Care Quality Improvement' and 'Health Care Quality Improvement'. At the bottom, there is a 'Resources' section with a list of links and a contact information box with the phone number (724) 283-0990 and email address info@hcqu.org.

# BODY SYSTEMS



Community Health  
C-O-N-N-E-C-T-I-O-N-S

A Health Care Quality Unit

## CONTENTS

Nervous System	3
Respiratory System	5
Digestive System	7
Dental/Oral Anatomy	9
Urinary System	11
Reproductive System	13
Endocrine System	15
Cardiovascular System	17
Sensory Systems	19
Musculoskeletal System	21
Lymphatic System	23
Integumentary System	25
Allergies	27

## COMMUNITY HEALTH CONNECTIONS



### “WHAT CAN YOUR HCQU DO FOR YOU?”

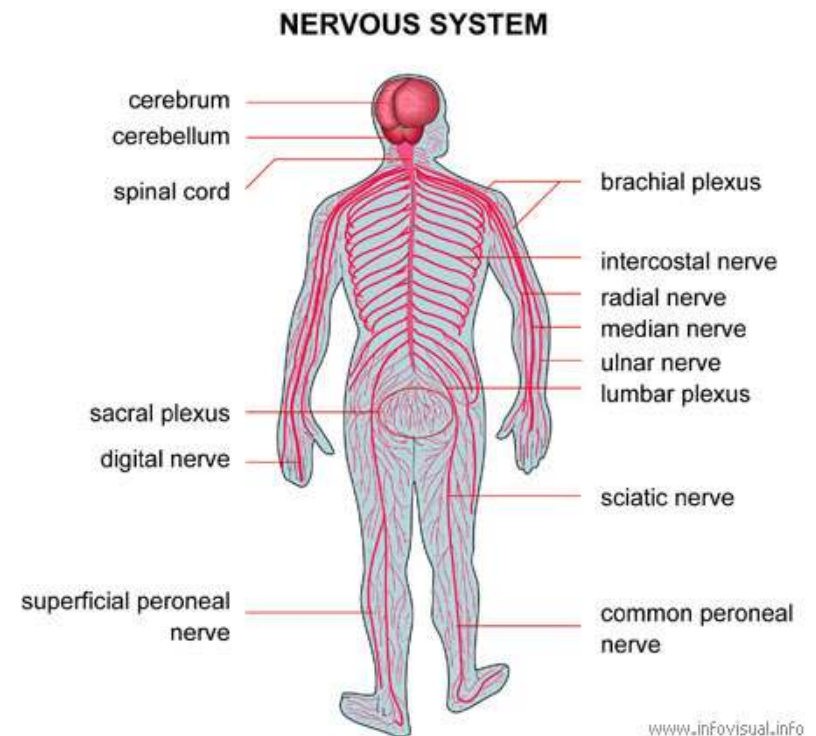
- ❖ *Medical and behavioral health trainings*
- ❖ *Intensive technical assistance*
- ❖ *Simple technical assistance*
- ❖ *Resource at IDT meetings*
- ❖ *Biographical timelines*
- ❖ *Holistic assessments*
- ❖ *Conferences and special speakers*
- ❖ *Annual “Our Future, Our Lives” event*



## NERVOUS SYSTEM

### Function

The nervous system transmits messages from the brain throughout the body via nerve pathways.



## Diagnostic Tests

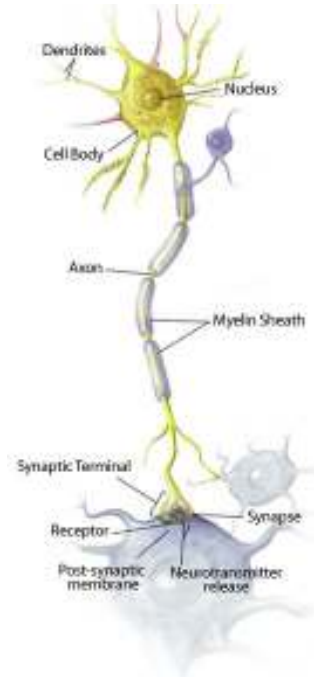
- Routine Physical
- Lab work
- Neurological exam
- Electroencephalogram
- CT Scan
- PET Scan
- MRI
- Electromyography

## Common Disorders

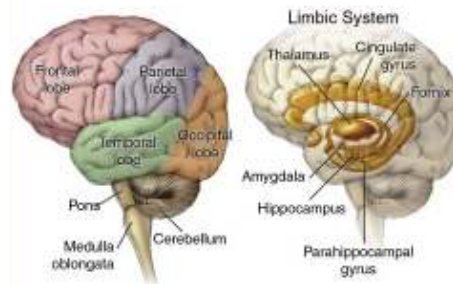
- Cognitive disability (mental retardation)
- Seizure disorders
- Dementia
- Cerebral Palsy
- Brain Injury
- Tumors
- Hydrocephalus
- Stroke
- Aneurysm
- Psychiatric disorders

## Medical Providers

- Primary Care Physician
- Neurologist
- Neurosurgeon
- Psychiatric Neurologist
- Psychiatrist
- Oncologists for tumor
- Psychologist
- Counselor



Anatomy of the Brain

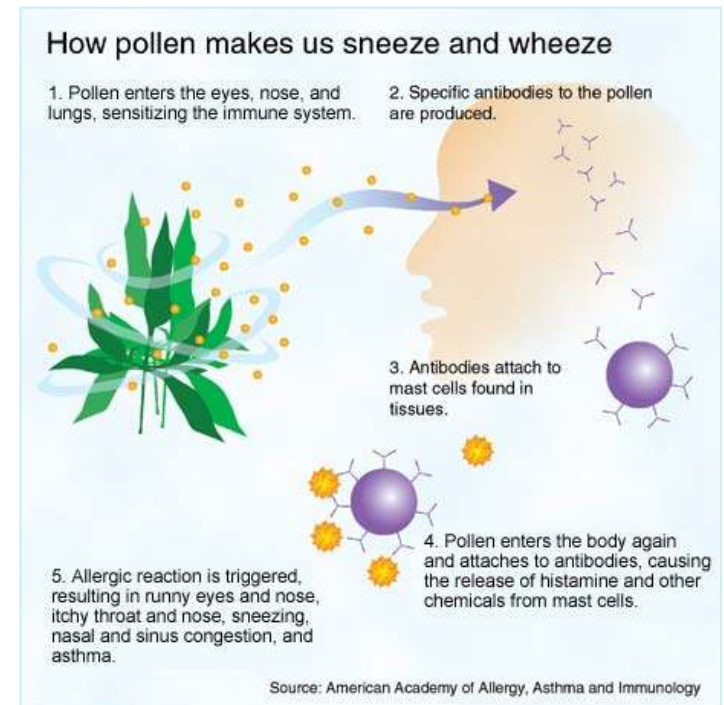


## Testing for Allergies

- Skin tests
  - Scratch test
  - Patch test
  - Puncture test
- Venipuncture
  - Radioallergosorbent test (RAST)
  - Blood test (IgE)
- Nasal swabbing

## Medical Providers

- Primary Care Physician
- Allergist
- Ear-Nose-Throat Specialist (ENT)

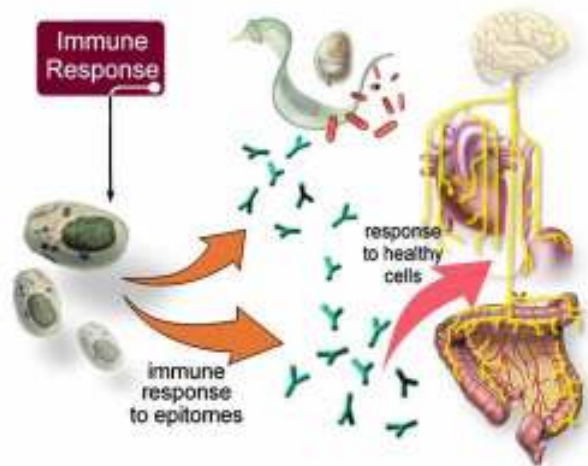


## Allergic Reaction vs Adverse Reaction?

- Specifically, an allergy is an *antigen-antibody response*
- An *adverse reaction* is any harmful or unintended effect of a medication, diagnostic test or therapeutic intervention

## Most Common Allergy Symptoms

- Runny nose, post nasal drip, watery eyes
- Ear itching
- Headache
- Fatigue (increased irritability, behaviors)
- Difficulty breathing
- Dry cough
- Hives/swelling
- Nausea
- Rash



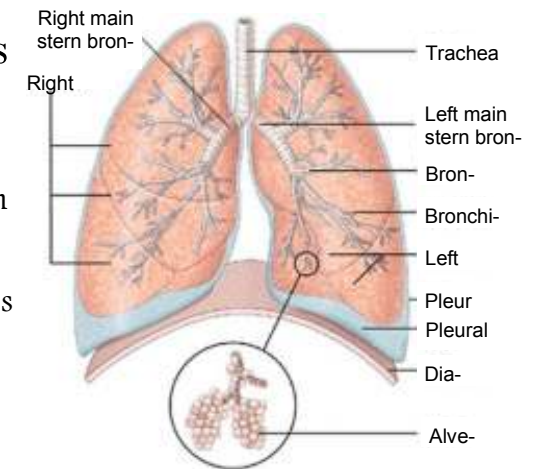
## RESPIRATORY SYSTEM

### Function

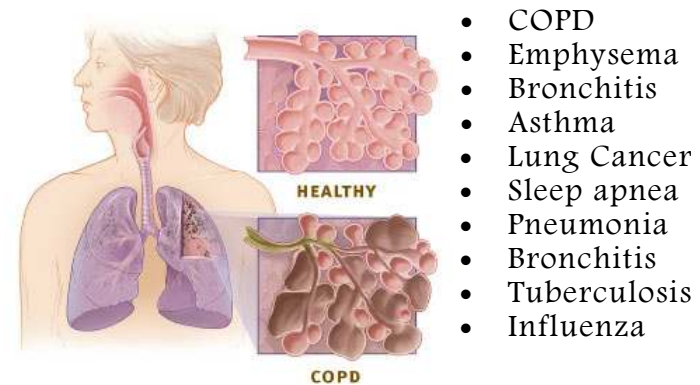
The respiratory system is responsible for warming, filtering, and humidifying inspired air, and for transporting oxygen to the cells of the body.

### Diagnostic Tests

- Routine physical
- Radiography
- Lung Scan
- Pulmonary function studies
- Pulse Oximetry
- Arterial Blood Gases
- Bronchoscopy
- Thoracentesis
- TB test



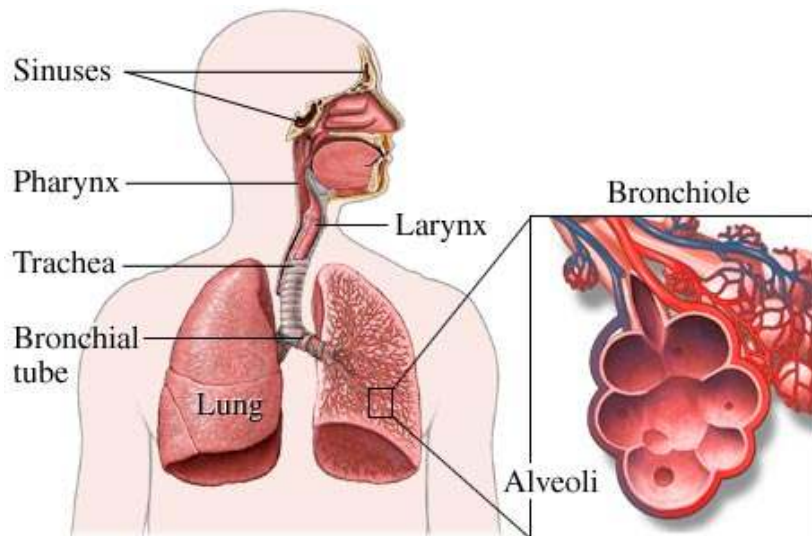
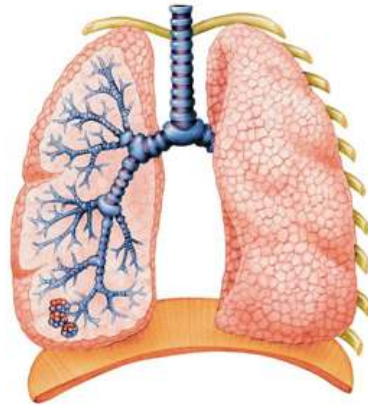
### Common Disorders



- COPD
- Emphysema
- Bronchitis
- Asthma
- Lung Cancer
- Sleep apnea
- Pneumonia
- Bronchitis
- Tuberculosis
- Influenza

## Medical Providers

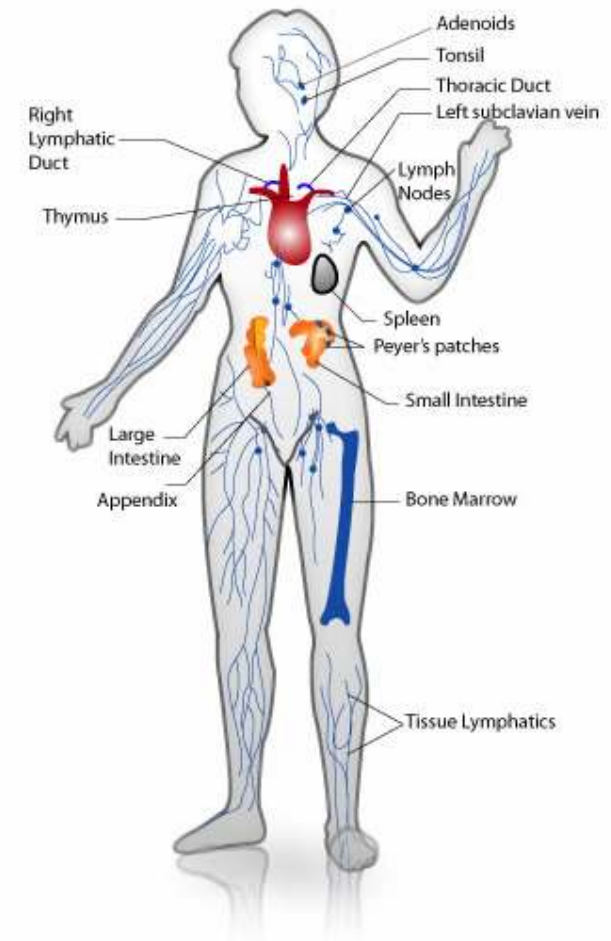
- Primary Care Physician
- Pulmonologist
- Respiratory Therapist



## ALLERGIES

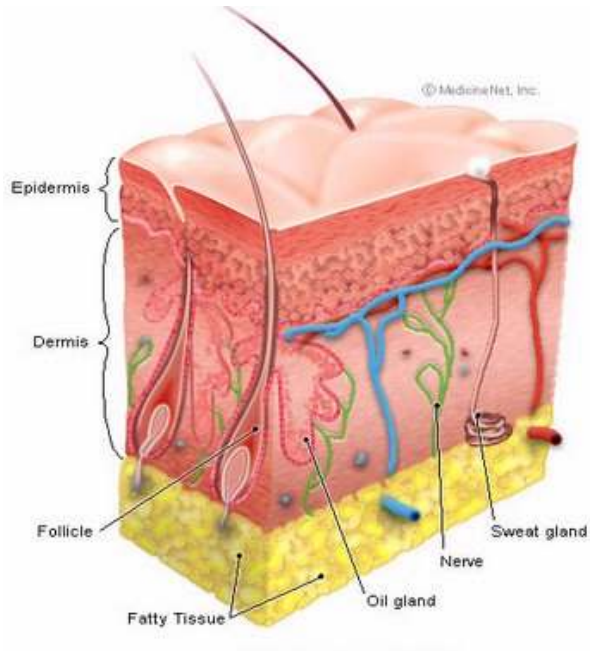
### What is an Allergy?

An allergy is an immune response to a foreign allergen to which an organism has developed antibodies.



## Medical Providers

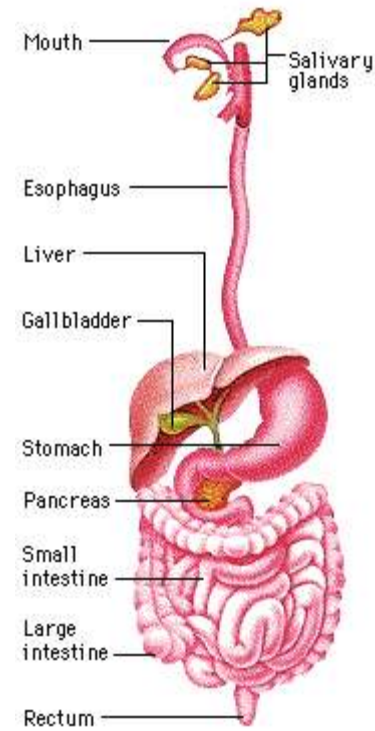
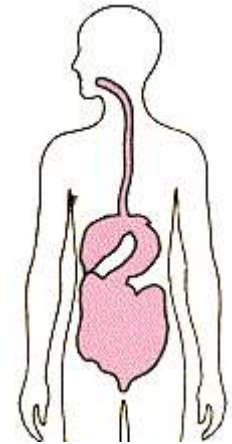
- Primary Care Physician
- Dermatologist
- Podiatrist
- Wound care nurses
- Plastic surgeon



## DIGESTIVE SYSTEM

### Function

The digestive system breaks down food into simple molecules that can be absorbed into the bloodstream that our bodies use for growth, repair and energy.

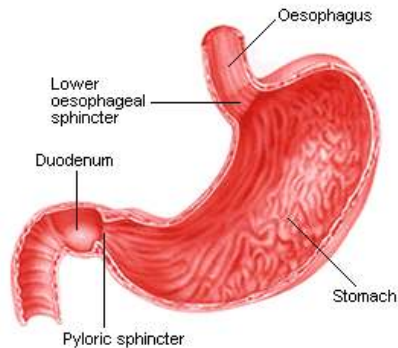


### Diagnostic Tests

- Routine physical
- Bloodwork
- X-rays
- Barium enema
- UGI
- Ultrasound
- Swallowing studies
- Biopsy
- Cat Scan
- MRI
- Colonoscopy
- EDG

## Common Disorders

- GERD
- Ulcer
- Gallstones
- Hepatitis
- Cirrhosis
- Esophagitis
- Dysphagia
- Bowel Obstruction
- Constipation
- Irritable Bowel Syndrome
- Megacolon
- Diarrhea
- Cancer
- Diverticulitis



## Medical Providers

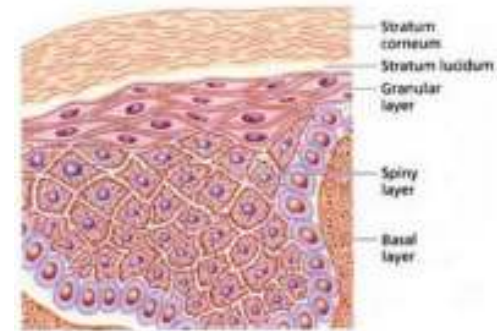
- Primary Care Physician
- Gastroenterologist
- Internist
- Oncologist
- Dietician
- Speech Therapist



## INTEGUMENTARY SYSTEM

### Function

The integumentary system provides defense against infection.



### Diagnostic Tests

- Wound culture
- Skin scrapings
- Biopsy
- Tissue sample

### Common Disorders

- Acne
- Seborrhea
- Psoriasis
- Eczema
- Decubitus ulcers
- Boils
- Warts
- Cellulitis
- Dermatitis
- Burns
- Sunburn
- Ingrown toenails
- Onychomycosis (nail fungus)
- Skin cancers:
  - Melanoma
  - Squamous cell
  - Basal cell

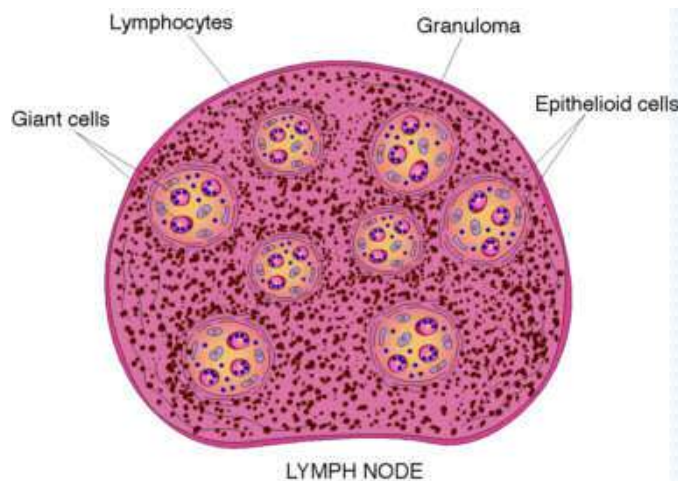


## Common Disorders

- Lymphadenitis/Lymphangitis
- Lymphedema
- Hodgkin's Lymphoma
- Non-Hodgkin's Lymphoma

## Medical Providers

- Primary Care Physician
- Hematologist
- Oncologist



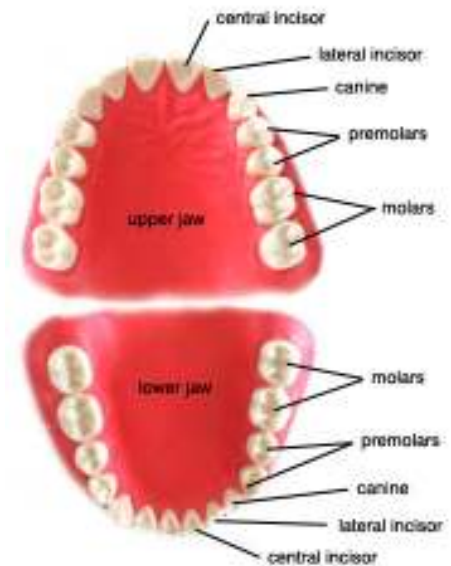
## DENTAL/ORAL ANATOMY

### Function

Oral anatomy comprises the first step in the digestion process, as it is responsible for grinding and softening food, and transporting it to the esophagus.

### Diagnostic Tests

- Dental exam
- X-rays
- Tissue cultures
- Lab work
- Biopsy

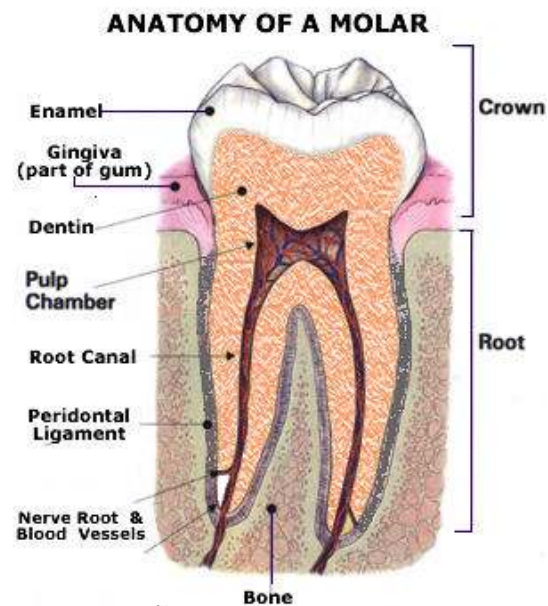


### Common Disorders

- Gingivitis
- Periodontitis
- Abscessed teeth
- Dental Cavities
- Tooth sensitivity
- Oral Cancer

## Medical Providers

- Dentist
- Dental Surgeon
- Endodontist
- Orthodontist
- Periodontist



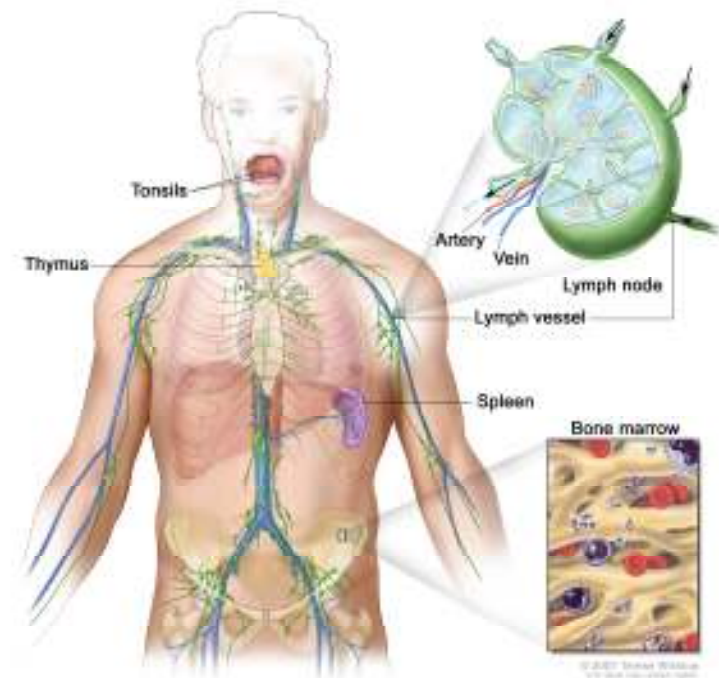
## LYMPHATIC SYSTEM

### Function

The lymphatic system is responsible for clearing away infection.

### Diagnostic Tests

- Specific blood tests
- Lymph node biopsy
- Bone marrow biopsy

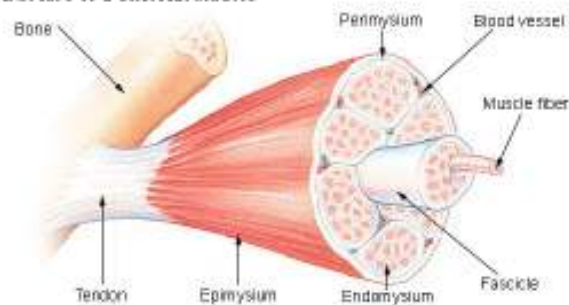


## Medical Providers

- Primary Care Physician
- Physiatrists
- Orthopedists
- Physical therapists
- Occupational therapists



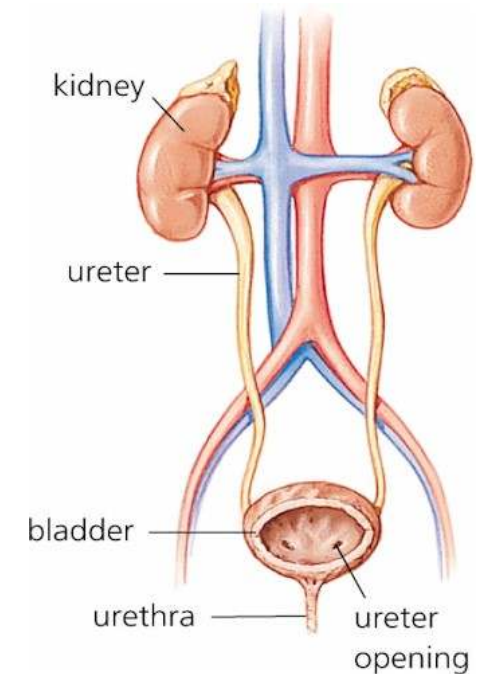
Structure of a Skeletal Muscle



## URINARY SYSTEM

### Function

The urinary system is responsible for the production of urine to excrete wastes. It also regulates water, mineral content, and acid-base balance of the blood and other body fluids.



### Diagnostic Tests

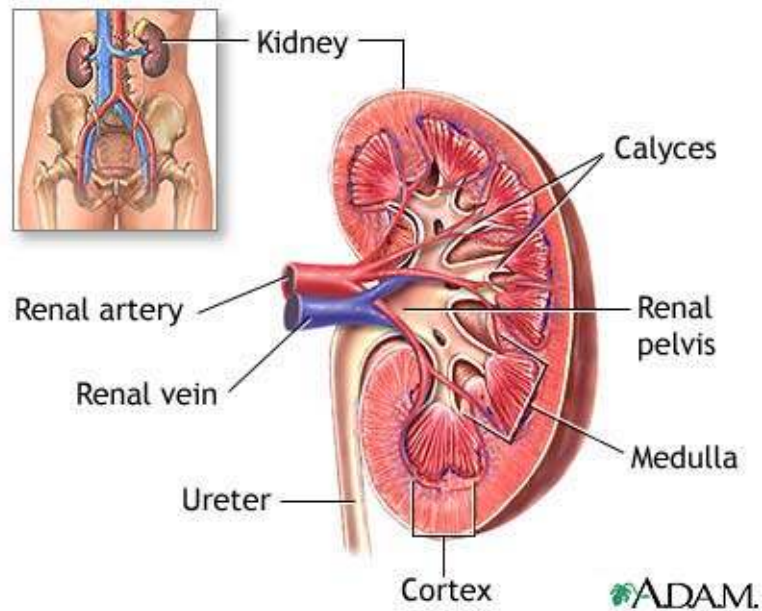
- Blood Tests
- Radiology
- Cystoscopy
- Sonogram

### Common Disorders

- Kidney stones
- Urinary incontinence
- Urinary retention
- Benign Prostatic Pypertrophy (BPH)
- Kidney Failure
- Urinary Tract Infection
- Neurogenic Bladder

## Medical Providers

- Primary Care Physician
- Urologist
- Nephrologist (kidneys)



## MUSCULOSKELETAL SYSTEM

### Function

The musculoskeletal system supports the body, and protects internal organs and tissues.

### Diagnostic Tests

- Radiology
- Lab test
- CAT scan
- MRI
- Ultrasound
- Biopsy
- Arthroscopy
- Electromyography
- Routine physical exam

### Common Disorders

- Contractures
- Sprains, Strains
- Fractures
- Osteoporosis
- Degenerative joint disease
- Arthritis
  - Rheumatoid
  - Osteoarthritis
  - Gout



- Blepharitis
- Myopia (nearsightedness)
- Presbyopia (decreased focus/farsighted)

## Ear:

- Sensory deafness
- Ruptured ear drum
- Meniere's Disease
- Swimmer's Ear
- Ear infection/ear ache
- Tinnitus
- Wax build up

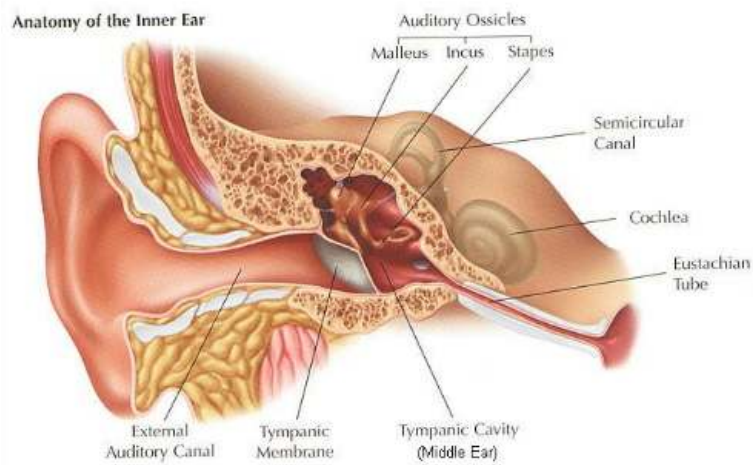
## Medical Providers

## Eye:

- Ophthalmologist (MD)
- Optometrist (OD)
- Optician

## Ear:

- Audiologist
- Ear-Nose-Throat Specialist (ENT)



## REPRODUCTIVE SYSTEM

## Function

The function of the reproductive system is to produce offspring, and to create the hormones that make us male and female.



## Diagnostic Tests

## Female:

- Physical exam
- Pelvic/rectal exam
- PAP smear
- Lab work
- Ultrasound
- Biopsy
- Mammogram

## Male:

- Physical exam
- Prostate/rectal exam
- PSA blood test
- Self testicular exam

## Common Disorders

## Female:

- STD
- Menstrual disorders
- Ovarian cyst
- Endometriosis
- Fibroid
- Cancer
  - Breast
  - Uterine
  - Cervical

## Male:

- STD
- Erectile dysfunction
- Enlarged Prostate
- Cancer
  - Prostate
  - Testicular

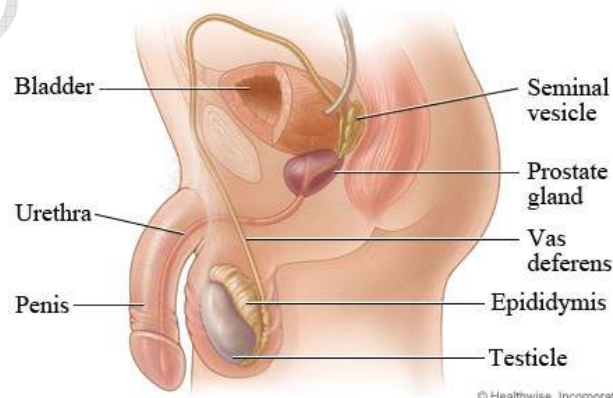
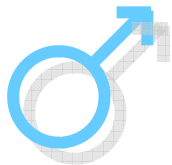
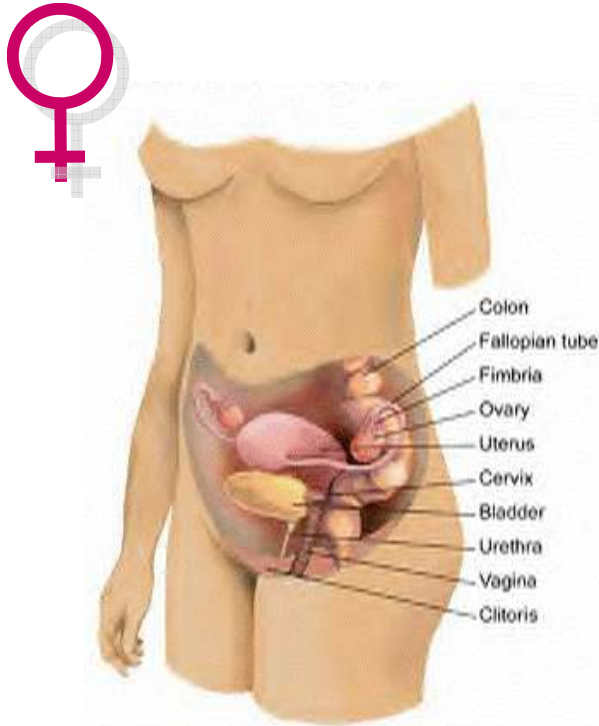
## Medical Providers

### Female:

- Primary Care Physician
- Gynecologist
- Obstetrician
- Oncologist

### Male:

- Primary Care Physician
- Oncologist
- Urologist



© Healthwise, Incorporated



## SENSORY SYSTEMS

### Function of Eyes and Ears

Sensory perception:

- Sight
- Depth perception
- Equilibrium
- Hearing

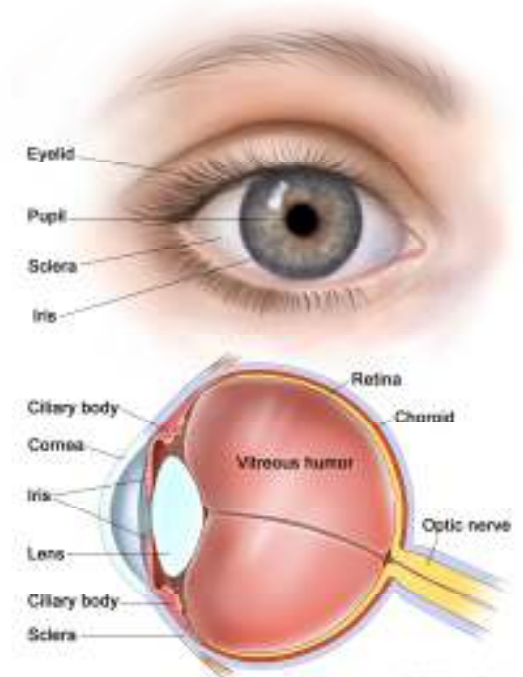
### Diagnostic Tests

Eye:

- Eye exam
- Glaucoma test

Ear:

- Otoscopic exam
- Hearing tests
- Sensory studies



### Common Disorders

The Eye:

- Astigmatism
- Blindness
- Cataracts
- Macular degeneration
- Detached retina
- Glaucoma
- Conjunctivitis (“pink eye”)

## Common Disorders

- Cardiac arrest
- Heart valve disease
- Blood clots
- Aneurysm
- Varicose veins
- Peripheral vascular disease (poor circulation)
- Myocardial Infarction (heart attack)
- High blood pressure
- Coronary artery disease
- Congestive Heart Failure
- Congenital Heart Disease

## Medical Providers

- Primary Care Physician
- Cardiologist
- Cardiovascular Surgeon
- Cardiac Rehab Specialists

### Risk Factors



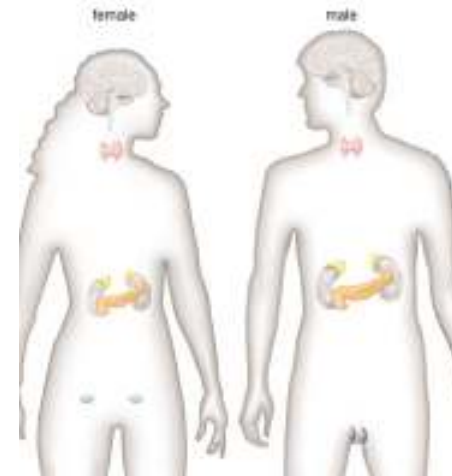
for Heart Dis-



## ENDOCRINE SYSTEM

### Function

The endocrine system is responsible for the secretion of hormones that affect metabolism, growth, and other organs and systems.

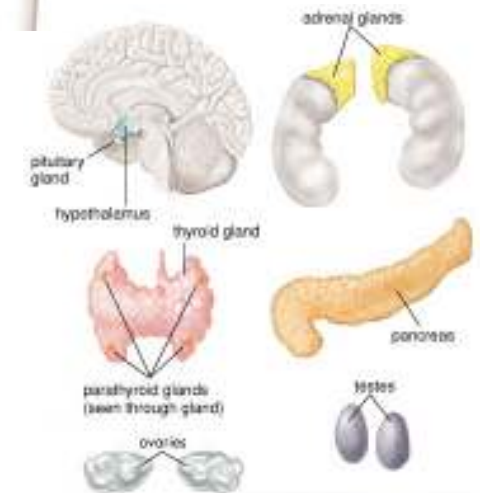


### Diagnostic Tests

- Various specific blood tests
- Urinalysis
- Scans
- Thyroid
- Radiology
- Ultrasound
- Biopsy

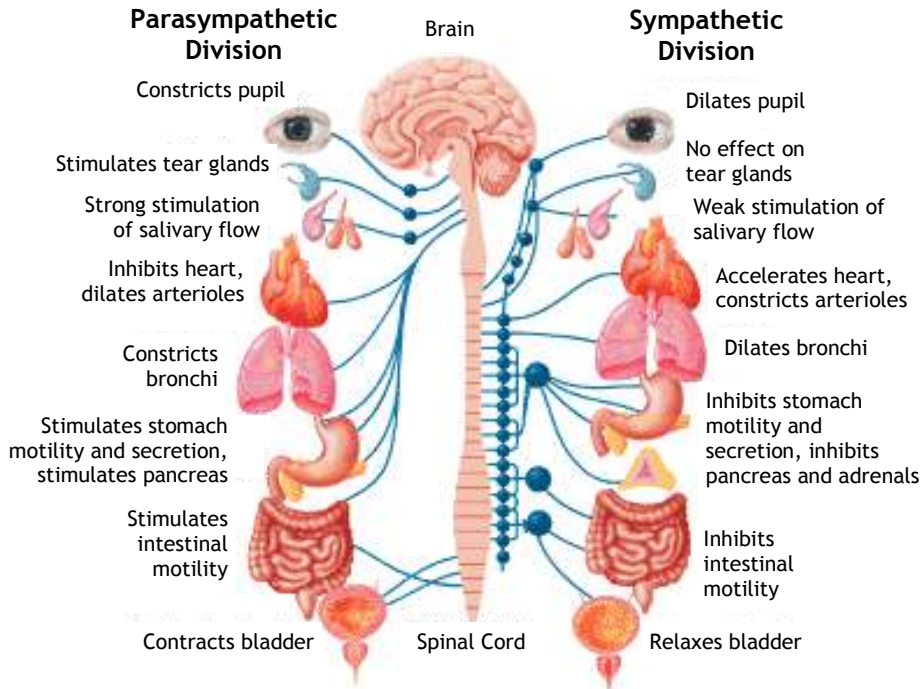
### Common Disorders

- Diabetes Mellitus
- Thyroid Disorder
- Cancer
  - Thyroid
  - Pancreatic



## Medical Providers

- Primary Care Physician
- Endocrinologist
- Oncologist



## CARDIOVASCULAR SYSTEM

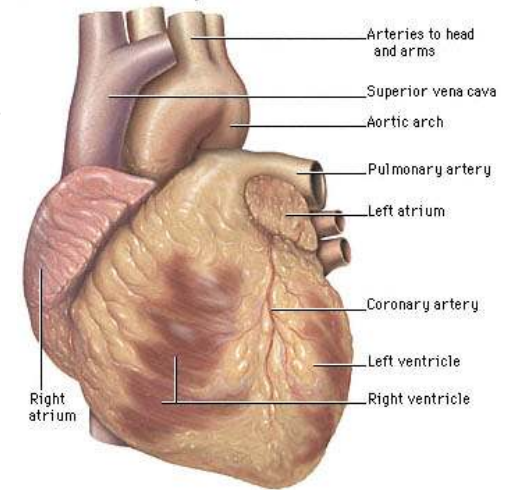
### Function

The cardiovascular system delivers nutrients and oxygen to cells, and removes waste from the body.

### Diagnostic Tests

- Electrocardiogram
- Cholesterol testing
- Cardiac enzymes
- Stress test
- Echocardiogram
- Angiogram
- Heart Catheterization

Exterior structures of the heart



Interior structures of the heart

