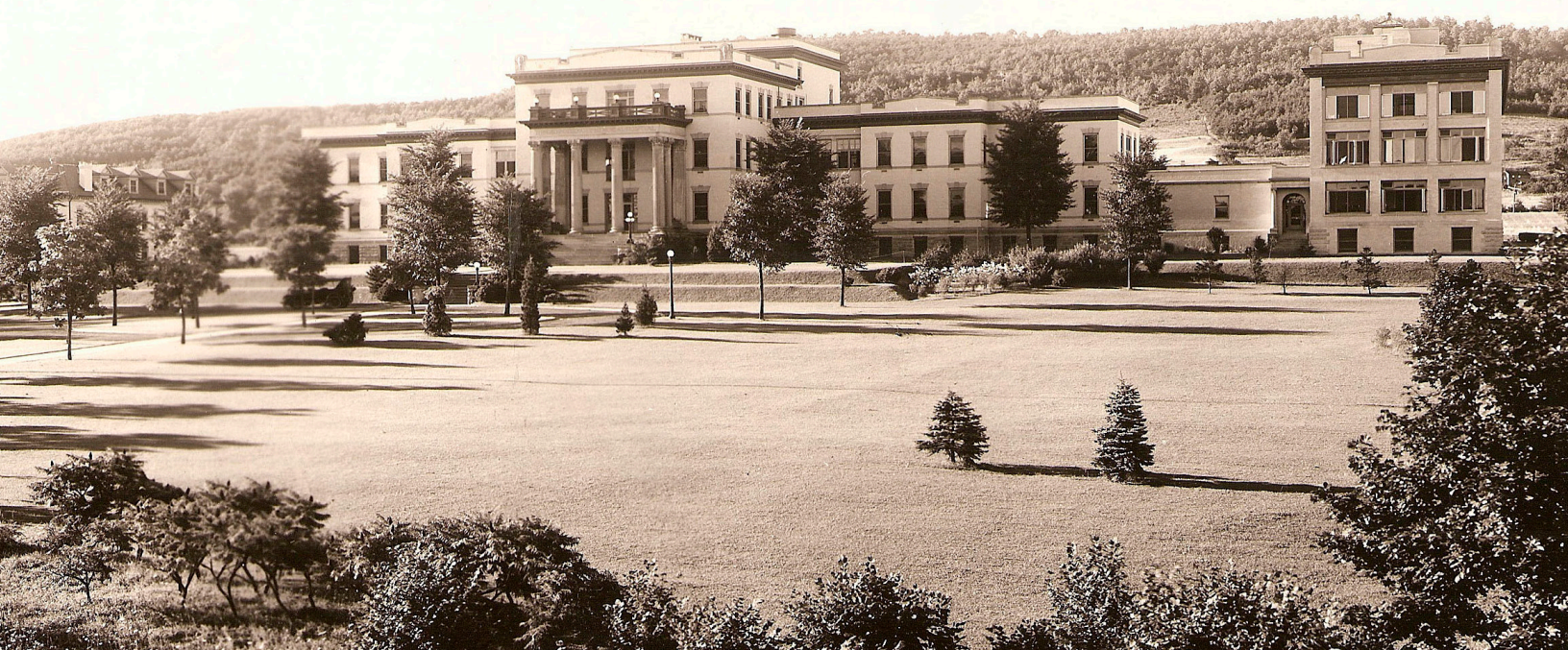


Caring for patients,
employees
and the
community.



Geisinger



Who we are

History

Geisinger was founded in 1915 by Abigail Geisinger, who at age 85 recognized the need for advanced healthcare in her rural central Pennsylvania community. “Make my hospital right; make it the best,” she said. Today, our purpose remains the same: Everything we do is about caring — for our patients, our members, our Geisinger family of physicians and employees and our communities.



Vision

Making better health easier.

Values

- **Kindness**

We strive to treat everyone as we would hope to be treated ourselves.

- **Excellence**

We treasure colleagues who humbly strive for excellence.

- **Safety**

We provide a safe environment for our patients, members and the Geisinger family.

- **Learning**

We share our knowledge with America's best and brightest to better prepare the caregivers of tomorrow.

- **Innovation**

We constantly seek new and better ways to care for our patients, our members, our communities and the nation.



Priorities

- Growing our share of risk membership and enhancing our ability to manage the at-risk population
- Putting the consumer first by delivering the access, convenience and coordination they desire
- Achieving continuous improvement among measures of organizational health

We care for patients.

- 10 hospital campuses
- 125+ clinic sites
- 3,000 employed and non-employed providers

We provide quality, affordable healthcare coverage.

- 500,000+ members
- 65,000+ contracted primary care providers and specialists
- 200+ hospitals in network

We teach, research and innovate.

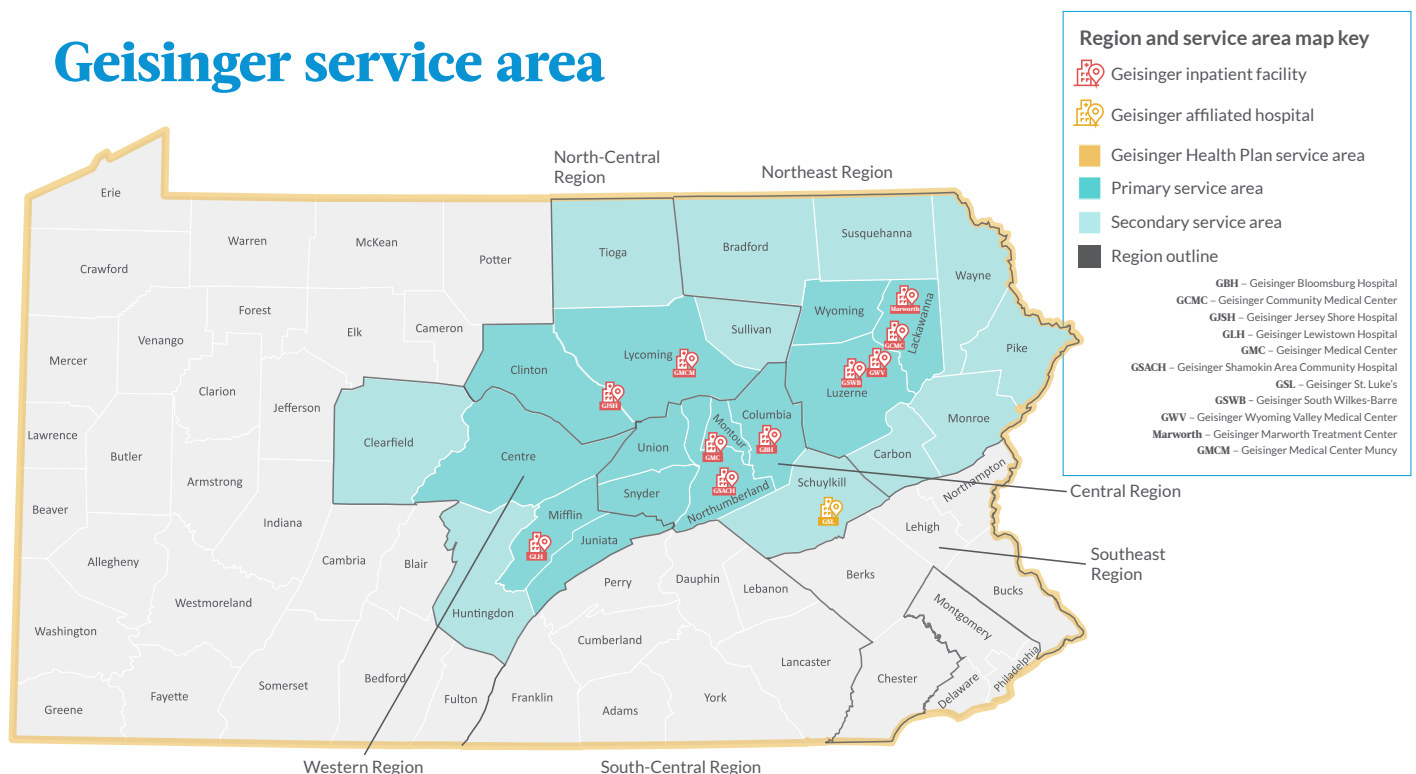
- 500 MBS/MD students at Geisinger College of Health Sciences
- 70 students at the Geisinger School of Nursing and 2,800 visiting nursing students
- 600+ residents and fellows
- Approximately 5,500 learners hosted annually
- 1,400+ active research projects

Geisinger institutes

Geisinger is divided clinically into 10 institutes, which deliver a team-based approach for providers, scientists, researchers, educators and other healthcare professionals. Our goal is to provide patients with consistency and continuity of care.

- Cancer Institute
- Diagnostic Medicine Institute
- Heart and Vascular Institute
- Medicine Institute
- Musculoskeletal Institute
- Neuroscience Institute
- Nursing Institute
- Population Health Initiatives Institute
- Surgery Institute
- Women and Children's Institute

Geisinger service area



Where we are

Our Geisinger locations are surrounded by natural beauty that will give you plenty of opportunities for outdoor recreation. The regions we serve also house a variety of arts and entertainment venues, dining options and cultural experiences for children and adults. In most of our footprint, the costs of living and real estate are lower than in nearby metropolitan areas.

Central Pennsylvania (Bloomsburg, Danville, Lewisburg, Williamsport, Jersey Shore) boasts beautiful scenery, an exceptionally high quality of life and a low cost of living.

- **Bucknell University's Weis Center for the Performing Arts**, which hosts 40 performances each year by dance troupes, musical groups and theatre companies drawn from around the world
- **The Williamsport Symphony Orchestra**, featuring five regular-season concerts, outdoor "Pops in the Park" concerts and youth performances
- **The Campus Theatre**, one of the nation's last single-screen art deco cinemas, which screens independent films, international movies and current features
- **Clyde Peeling's Reptiland**, a nationally renowned specialty zoo offering hands-on experiences for children
- **Knoebels Amusement Resort**, the nation's largest admission-free amusement park, which boasts the world's top-ranked wooden roller coaster
- **Little League World Series**, an annual youth baseball tournament that attracts teams from around the globe
- **Bloomsburg Fair**, an annual event with livestock and horticultural exhibits, amusement rides, concerts, food and more
- **Worlds End State Park**, a 780-acre park in the Loyalsock State Forest, featuring opportunities for hiking, hunting, fishing, swimming, kayaking and camping

Northeast Pennsylvania (Scranton, Wilkes-Barre) offers the choice of living in quiet, serene rural or suburban areas within easy commuting distance of its two larger cities.

- **F.M. Kirby Center for the Performing Arts**, an art deco-style theater presenting Broadway musicals, live bands, theater performances and more
- **Scranton/Wilkes-Barre RailRiders**, a Triple-A minor-league affiliate of the New York Yankees baseball team
- **Wilkes-Barre/Scranton Penguins**, a minor-league affiliate of the Pittsburgh Penguins hockey team
- **Mohegan Sun at Pocono Downs**, Pennsylvania's first casino, featuring more than 2,300 slot machines, over 90 table games and live harness racing
- **Steamtown National Historic Site**, a railroad museum and heritage railroad in downtown Scranton
- **Pocono Mountains**, offering over 185 slopes and trails for downhill and cross-country skiing, snowboarding, horseback riding, snowtubing and more



Central-western Pennsylvania (Lewistown, State College)

is home to Penn State University and the Juniata River Valley. This area has a wide range of restaurants and shops and ample opportunities to enjoy the sights and sounds of nature.

- **Penn State's Eisenhower Auditorium**, a 2,500-seat venue that hosts performances by artists such as Billy Joel, Itzhak Perlman, the Dance Theatre of Harlem and B.B. King
- **Penn State Nittany Lions**, a Big Ten, NCAA Division I football team
- **Raystown Lake Region**, with breathtaking scenery and 120 miles of shoreline on Pennsylvania's largest lake, perfect for hiking, fishing, boating and no shortage of spots to recharge
- **East Broad Top Railroad**, a National Historic Landmark, offers visitors from around the world the opportunity to experience America's industrial past
- **Penn's Cave**, the nation's only all-water cavern, explored by boat
- **Pennsylvania Wilds**, offering stargazing, a wild elk herd, hiking trails, two rivers, and more than 2 million acres of public land

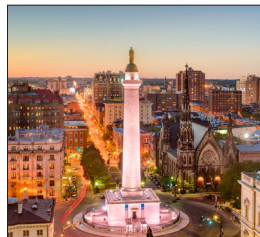
Four of the nation's biggest cities — New York, Baltimore, Philadelphia and Washington, D.C. — are just a few hours' drive from anywhere in our service region.

Take advantage of everything these metropolitan areas have to offer, while enjoying the low cost of living, affordable upscale housing, excellent schools and other benefits of residing in a less urban environment.

Learn more about the region at visitpa.com.



New York City



Baltimore



Philadelphia



Washington, D.C.



Inpatient and main outpatient locations throughout Geisinger's footprint

Central Region

- Geisinger Medical Center, Danville, Pa.
- Geisinger Janet Weis Children's Hospital, Danville, Pa.
- Geisinger Healthplex Woodbine, Danville, Pa.
(a campus of Geisinger Medical Center)
- Geisinger Bloomsburg Hospital, Bloomsburg, Pa.
- Geisinger Shamokin Area Community Hospital, Coal Township, Pa. (a campus of Geisinger Medical Center)
- Geisinger St. Luke's Hospital, Orwigsburg, Pa.
(a joint venture of Geisinger and St. Luke's)

North-Central Region

- Geisinger Jersey Shore Hospital, Jersey Shore, Pa.
- Geisinger Medical Center Muncy, Muncy, Pa.
(a joint venture of Geisinger and Highmark)

Northeast Region

- Geisinger Wyoming Valley Medical Center, Wilkes-Barre, Pa.
- Geisinger South Wilkes-Barre, Wilkes-Barre, Pa.
(a campus of Geisinger Wyoming Valley Medical Center)
- Geisinger Community Medical Center, Scranton, Pa.
- Geisinger Healthplex CenterPoint, Pittston, Pa.
- Geisinger Marworth Treatment Center, Waverly, Pa.
- Geisinger Behavioral Health Center Northeast, Moosic, Pa.

Western Region

- Geisinger Lewistown Hospital, Lewistown, Pa.
- Geisinger Healthplex State College, Port Matilda, Pa.
(a campus of Geisinger Lewistown Hospital)
- Geisinger Scenery Park, State College, Pa.

Our hospitals and medical facilities are supported by nearly 50 primary care locations.

We also have 25 ConvenientCare, ConvenientCare+ and other urgent care clinics throughout the regions we serve, providing quick, convenient healthcare and easing the demand on emergency rooms.

Many of our care locations offer Geisinger Pharmacy, so patients can pick up their prescriptions right on the spot.



Geisinger Medical Center and Geisinger Janet Weis Children's Hospital



Geisinger Bloomsburg Hospital



Geisinger Lewistown Hospital



Geisinger Community Medical Center



Geisinger Marworth Treatment Center

Geisinger Health Plan

We are one of just a handful of payer-provider healthcare organizations in the country. This fiduciary arrangement creates a group of patients who come to us for clinical services and are also covered by Geisinger Health Plan.

For patients with chronic diseases or who have had a traumatic injury, we've found that this arrangement allows us to optimize their care — eliminating up to 35% of the costs that bring no benefit — but more importantly, creating more positive outcomes for our patients.

Providing both care and coverage has led to a significant decrease in hospital readmittance, revolutionized our approach to care and given us the flexibility to design innovative programs such as:

- **Our Proven portfolio** – The cornerstone of our value-based care, the portfolio includes ProvenCare, ProvenHealth Navigator, ProvenExperience and ProvenRecovery. (See the *What we do* page for more information.)



- **Mail-order pharmacy** – Providing our members with the prescriptions they need, right at their doorstep, is not only convenient, efficient and less costly for them, but it improves medication adherence.
- **Geisinger at Home** – Comprehensive in-home medical and palliative services support patients who are too frail, or whose conditions are too complex, to leave their homes for preventive or maintenance health visits.

Geisinger 65 Forward

This innovative approach to primary care for people 65 and older gives patients more time with their doctors. And it puts all the health services they need under one roof — including lab and radiology services, wellness and social activities, state-of-the-art fitness equipment and other amenities.



Geisinger Health Foundation

Energized by the opportunities and challenges in healthcare, Geisinger is boldly defining what it means to make better health easier. Geisinger Health Foundation fuels this vision through philanthropy, thanks to the support of our community members, grateful patients, alumni, colleagues, and friends. Our donors are a vibrant reflection of the communities we serve and bring longevity to our mission as a nonprofit healthcare organization.

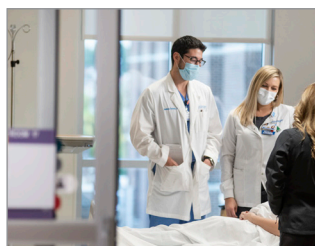
In today's rapidly evolving healthcare environment, the power of philanthropy to propel and sustain transformation is immeasurable. The generosity of our donors helps us advance patient care through research, reduce barriers to health equity and train tomorrow's healthcare professionals. Philanthropy is pivotal to medical innovation and patient-centered care, and through it, Geisinger Health Foundation aligns resources and priorities with Geisinger's strategic focus on making better health easier.

Making better health easier through philanthropy



Community

Expanding access to behavioral healthcare in rural communities



Clinical

Giving our kids better access to care they need, no matter where they are



Education

Scholarship support for tomorrow's healthcare professionals



Research

Impacting generations through genomics and population health research

Diversity, equity and inclusion

Geisinger has long recognized the value — and embraced the diversity — of cultures and people we serve. Making our environment a more diverse, equitable and inclusive place for all happens through treating everyone the way they want to be treated and valuing different backgrounds, lived experiences and perspectives.

The most foundational component of our commitment: building a trusting and inclusive culture where each team member can reach their fullest potential. By doing so, we unlock our collective ability to provide the best care to every patient and member.

The main pillars of our DEI strategy include:

- **Culture** – Cultivate a trusting and inclusive environment.
- **Talent** – Advance organizational talent diversity.
- **Supplier diversity** – Invest in diverse businesses in our communities (i.e., minority, women, LGBTQ+, disability and veteran-owned businesses).
- **Community partnerships** – Strengthen our partnerships and engagement in our communities.
- **Health equity** – Address health disparities through increased application of cultural and structural competency and data-driven approaches.

DEI Council

Sponsored by Terry Gilliland, MD, president and CEO, our DEI Council plays a significant role in informing and executing our strategy. Members of the council are influential and skilled leaders who understand the importance of diversity, equity and inclusion in clinical, educational and professional settings.

Mobilizing our employees

Our employee resource groups (ERGs) help us carry out our DEI strategy. These voluntary, employee-led groups are based on common interests, backgrounds or demographic characteristics.

Through our ERGs, we can foster inclusivity by reinforcing our commitment to DEI and offering experiences and perspectives that help us make better health easier for everyone — every time.

Our ERGs:

- **BOLD** (Black Outreach Leadership Development)
- **GAIN** (Geisinger's Ability and Inclusivity Network)
- **G-PRIDE** (Geisinger — People Ready for Inclusion, Diversity and Equality)
- **SALUD** — Spanish for “health” or “cheers” (in a social setting), provides support to our Hispanic/Latino employees
- **VetNet** — Support network for Geisinger service members, veterans and their families
- **Women LEAD** (Legacy, Empowerment, Advocacy, Development)



Geisinger College of Health Sciences

We educate aspiring physicians, scientists and healthcare professionals using a patient-centered and evidence-based education model that promotes innovation and discovery — the Geisinger way. Our Research Institute's projects and clinical trials target the health issues prevalent in northeastern and central Pennsylvania. And through innovative initiatives like the Abigail Geisinger Scholars Program, many of our Geisinger Commonwealth School of Medicine graduates plan to stay in the Geisinger footprint and care for our communities.

Geisinger College offers a Master of Biomedical Sciences program in our Geisinger School of Graduate Education and an Associate Degree in Nursing in our Geisinger School of Nursing.

We offer graduate medical education programs in a variety of specialties and subspecialties:

- 45 residency programs
- 35 advanced fellowships



Geisinger Life Flight

The leader in medical air transportation in central and northeastern Pennsylvania. Geisinger Life Flight® averages 3,500 flights a year with nine state-of-the-art helicopters, as well as a ground-based ambulance when air access isn't an option.





MYCODE®



I am a MyCode participant because...

"I felt so strongly that I had an obligation as a parent to say, 'Wow, there's something so incredible in the future of medicine that I can do this now for my child, my family.'"

– Cheryl and Loudon



Research at Geisinger

Research has been a key element of Geisinger's mission since its founding. Dr. Harold Foss, our first chief surgeon and director, established research as part of his vision and encouraged his staff to "use creative research and work together to find better ways to conquer disease as observed among our patients."

Today, Geisinger has an exciting research environment with 400+ team members, including more than 50 research faculty and a growing number of clinicians and learners engaging in collaborative research. We embrace "team science" approaches to solve the biggest problems in healthcare and encourage research that can be uniquely done at Geisinger — leveraging our high-quality patient care; fully integrated healthcare system; large, stable patient population; advanced electronic health record; and clinical data warehouse.

Research at Geisinger focuses on learning from every patient to maximize better health for all. We investigate a broad range of research topics across our system, including genomics, population health, data science and informatics, implementation science, health services research and bioethics. In 2022, Geisinger was awarded more than \$45 million in external grant and contract funding; carried out 1,400 research studies, including clinical trials; and published more than 1,000 scientific articles.

Our flagship research study, the MyCode® Community Health Initiative, is an internationally recognized precision health project that pairs health and DNA sequence data from our patient-participants for various research programs, including our Genomic Screening and Counseling Program, which returns clinically actionable results for conditions like cancer and heart disease. With more than 325,000 participants, MyCode is the largest healthcare system-based study of its kind.

What we do

A snapshot of our innovative care programs

Machine learning

In partnership with Medial EarlySign, Geisinger is harnessing the power of artificial intelligence and machine learning to identify patients at high risk of disease, health complications or mortality, and encourage them to seek preventive care or take other appropriate action. One algorithm detected potential signs of colorectal cancer in patients identified as high-risk who had missed a routine colonoscopy, and subsequent screening showed significant findings in 70% of patients who then scheduled a colonoscopy.

LIFE Geisinger

People age 55+ who are starting to lose the ability to care for themselves can continue living independently at home with the help of LIFE Geisinger. Five adult health centers throughout Geisinger's footprint give older adults a place to spend their days, offering healthcare, wellness activities, social opportunities, meals, personal care and transportation to and from home and doctors' appointments.

Steele Institute for Healthcare Innovation

Innovation is one of our core values. Geisinger's Steele Institute for Health Innovation was established to elevate and share Geisinger's efforts to transform healthcare delivery by improving patient experience, quality, efficiency and outcomes.

Some of the shining stars among our visionary programs:

- **Fresh Food Farmacy®** – This nationally spotlighted program with three locations helps food-insecure patients control their Type 2 diabetes by providing education, recipes and healthy food for 10 meals a week, free of charge, for themselves and their families.
- **Free2BMom** – Pregnant people with substance use disorders receive medication-assisted treatment and support from community organizations to make sure they get the care they need during pregnancy and for the first two years following birth.



Our leadership

Geisinger Health Board of Directors

Heather M. Acker, Chair Executive Vice President and Chief Financial Officer of Gentex Corporation

John C. Bravman, PhD President of Bucknell University

Joseph J. Bridy Senior Partner and Fixed Income Portfolio Manager for Hamlin Capital Management LLC

Benjamin K. Chu, MD Retired – Former Senior Advisor for Manatt Health

Sherry A. Glied, PhD Dean of Robert F. Wagner Graduate School of Public Service, New York University

Jeffrey Jacobson President and Owner of Jacobson Hat Co. Inc., Birch Cutting Corp., Benay Hat Company and Colombino Headwear

Thomas H. Lee Jr., MD, MSc Diplomate of the American Board of Internal Medicine, Subspecialty Cardiology, and Chief Medical Officer of Press Ganey

Virginia McGregor Treasurer, Democratic National Convention, Board Member of McGregor Industries and Vice Chair of the Geisinger Commonwealth School of Medicine Board

Robert E. Poole President and Chief Executive Officer of S&A Homes Inc. and CEO of Poole Anderson Construction and Space Mart Development Company LP

Don T. Rosini President of Shamokin Carbons

Terry Gilliland, MD President and Chief Executive Officer of Geisinger

Gail R. Wilensky, PhD Economist and Senior Fellow of Project HOPE and Trustee of the Combined Benefits Fund of the United Mine Workers of America and National Opinion Research Center

Geisinger executive leadership team

Terry Gilliland, MD President and Chief Executive Officer – Geisinger

Steven B. Bender, Esq. Chief Legal Officer – Geisinger

Amy Brayford Executive Vice President, Chief Human Resource Officer and Chief of Staff – Geisinger

Julie Byerley, MD, MPH President and Dean – Geisinger Commonwealth School of Medicine, and Executive Vice President and Chief Academic Officer – Geisinger

J. Edward Hartle, MD Executive Vice President and Chief Medical Officer – Geisinger

Dominic Moffa, MBA Executive Vice President and Chief Strategy Officer – Geisinger

Kevin Roberts, MBA, CPA Executive Vice President and Chief Financial Officer – Geisinger

Janet Tomcavage, MSN, RN Executive Vice President and Chief Nursing Executive – Geisinger

Kurt J. Wrobel President – Geisinger Health Plan, and Executive Vice President of Insurance Operations – Geisinger

