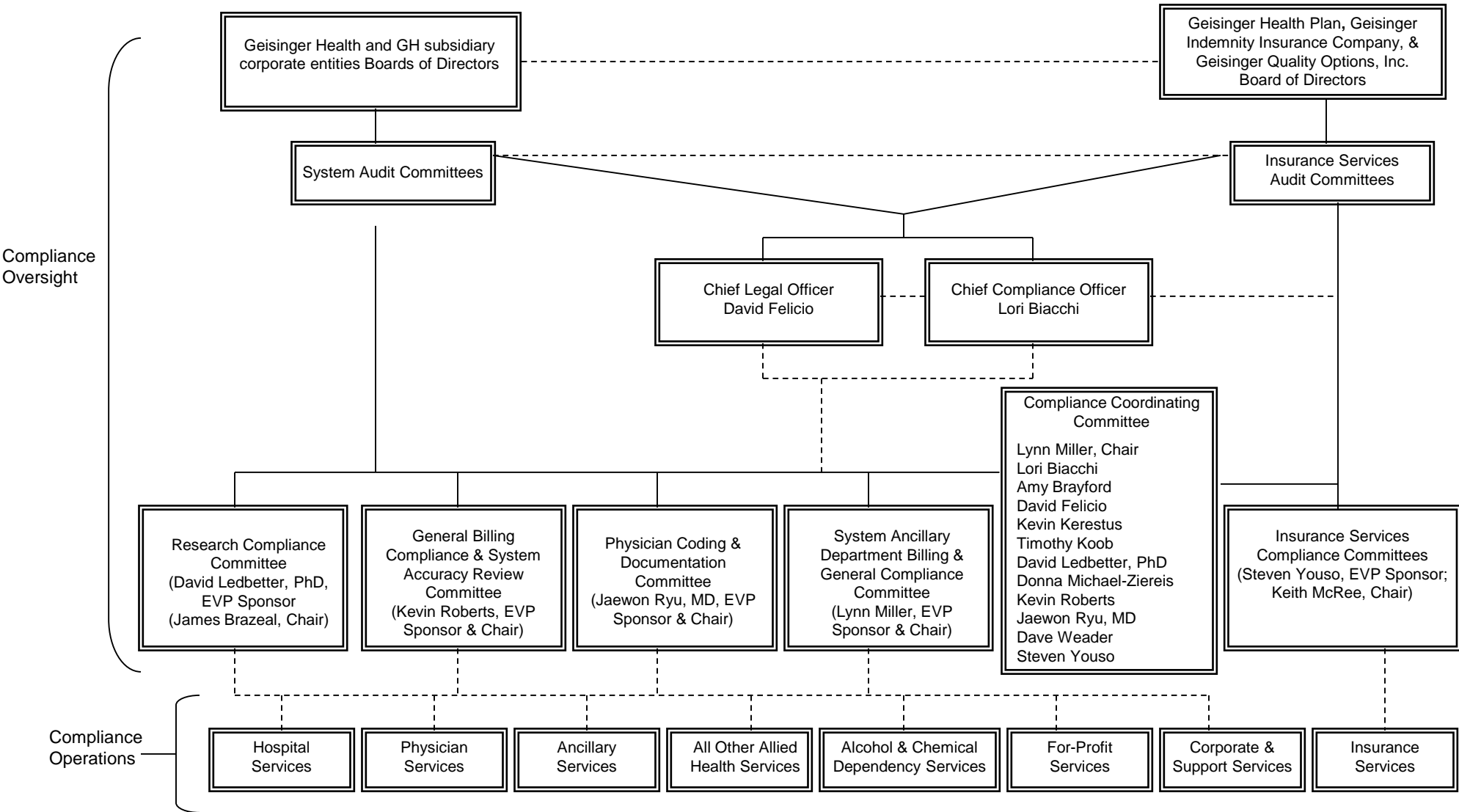


Geisinger Health* Corporate Compliance Structure



_____ Direct reporting relationship.
 - - - - - Matrixed relationship.

* Throughout this document the acronym "GH" or the terms "System," "Geisinger" or "Geisinger Health " shall refer to the entire Health Care System comprised of Geisinger Health as parent and all subsidiary corporate entities comprising the Health Care System.

