

Staff updates and achievements

A big congratulations to all!

MBA

Gian Algarin, an application developer on our Data Informatics team, received his MBA in Management and Operations from Misericordia University.

Professional Scrum Masters

After completing a two-day training covering the principles and process theory behind Scrum framework and the role of the Scrum, Gavin Claycomb, Stephen Castor, Jeffrey Border, Liz Finch, Kimberly Golomb, Jonathan Hardenstine, B.J. Kaledas, Tracey Missien, David Riviello, Cory Siegrist and Tanya Tennyson from our Digital Transformation team were certified as Professional Scrum Masters.

What's a Scrum Master? Learn about it [here](#).

Foundations in Design Thinking Certificates

Gavin Claycomb, Stephen Castor, Jonathan Hardenstine, Tracey Missien, David Riviello, Cory Siegrist and Tanya Tennyson also received their Foundations in Design Thinking Certificates from IDEO – a company that's been honing a human-centered approach to business for over four decades.

MHA

Lora Kratzer, one of SIHI's project managers, received her Master of Health Administration degree from Capella University.

A special shout out to Dr. Murphy



Karen Murphy, PhD, RN, has been awarded the Healthcare Information and Management Systems Society Inc. Changemaker in Health Award. Congratulations!

Nudging the world in the right direction

Co-directors of our Behavioral Insights team Michelle Meyer, PhD, JD, and Chris Chabris, PhD, recently joined Pennsylvania University's Wharton School's Behavior Change for Good Initiative as team scientists.

The initiative unites experts in the social sciences, medicine, computer science and neuroscience with leading organizational partners to help advance the science and practice of behavior change.

Exciting changes are on the horizon – and our teammates are helping drive it.

[Read more](#)



ConnectedCare365 launches in Lewistown

ConnectedCare365 launched this April at Geisinger's Lewistown Clinic. The digital platform, powered by Noteworthy, supports the care team by giving patients a tool for continuous, bi-directional communication and monitoring. Patients can track their health, capture information such as blood pressure and weight, review educational materials and easily communicate with their care team.

CC365, formally known as the Chronic Disease Management Command Center, prioritizes the highest risk patients and triages them to the right resources.



It allows for automation of workflows where appropriate and engages patients in managing their own health.

Early findings show a reduction in duplicate documentation and patients who are more engaged in their care. This systemwide initiative began with case managers and will be expanded to include other members of the care team such as pharmacy and nutrition. The goal is improved patient health, fewer emergency room visits and hospitalizations, and ultimately lower care costs.



The World Health Care Congress Virtual Event

Did you catch the WHCC's virtual event in June? Our chief data informatics officer, David Vawdrey, PhD, and Greg Strevig, vice president of Enterprise Analytics, gave a presentation on *Preparing Healthcare Leaders for Transformation During Pandemic Times and Beyond* highlighting why value-based care needs value-based analytics.

Topics the team covered included:

- Building an analytics platform that integrates digital health streams to support real time point-of-care decision making
- Unlocking opportunities to impact care with insights derived from data integrated from multiple sources

Dr. Vawdrey also was part of the keynote panel discussion *Driving Innovation with Virtual Care and Technology*.

[Read more](#)

Does boarding in the ED affect outcomes?

A team headed by Leslie Laam, PhD, Geisinger's lead business intelligence analyst, published an article in NIH's National Library of Medicine about the impact length-of-stay in an emergency department has on admitted patients' outcomes.

According to the study, delays in bed placement could be associated with longer stays for admitted patients and increased morbidity and mortality.

[Read the full chapter](#)



The CMS AI Health Outcomes Challenge

CMS's challenge was to use AI tools – such as deep learning and neural networks – to predict health outcomes for Medicare beneficiaries.

Geisinger and Medial EarlySign teamed up to create a solution that predicts:

- Unplanned hospital admissions due to:
 - » All causes
 - » Acute myocardial infarction
 - » Heart failure
 - » Chronic obstructive pulmonary disease
 - » Coronary artery bypass graft surgery
 - » Pneumonia
- Readmissions to hospital within 30 days of discharge from hospital or skilled nursing facility for:
 - » All causes
 - » Acute myocardial infarction
 - » Heart failure
 - » Chronic obstructive pulmonary disease
 - » Coronary artery bypass graft surgery
 - » Pneumonia
 - » Total hip arthroplasty/total knee arthroplasty
- Risk of healthcare-associated complications
 - » Post-op respiratory failure
 - » Sepsis
- 12-month mortality

Based on risk and contributing factors, best practices are recommended to fit patient needs.

Congratulations to the team for taking second place in this prestigious competition. Winning solutions may potentially be used in CMS Innovation Center payment and service delivery models.

Monitoring COVID-19 patients at home with Epic

Our robust electronic health record makes it easy to monitor COVID-19 patients from home using Epic's MyChart Care Companion.

Effective symptom tracking makes timely intervention possible and helps avoid unnecessary visits to the hospital or doctor's office. The MyChart Care Companion also helps reduce anxiety by helping patients feel connected to the people who check in on them.

Our Data Informatic Team's innovative approach was featured on [Fierce Healthcare's webiste](#).



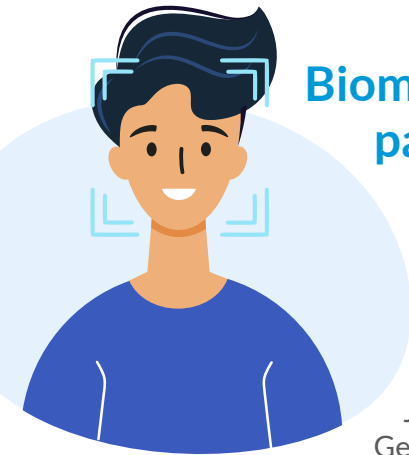
The KidsX Panel: How to structure pilot agreements



In early March, Rebecca Stametz, DEd, MPH, vice president for Digital Transformation, participated in the *KidsX Panel: How to Structure Pilot Agreements*, which included representatives from five top pediatric hospitals within the KidsX network.

Panel members shared their organizations' experiences structuring contracts with startup companies – highlighting pricing considerations, intellectual property and terms.

Geisinger Janet Weis Children's Hospital contributed to the KidsX Accelerator's successful launch and continues to work with KidsX to help transform pediatric care.



Biometrics let patients check in with just a smile

Thanks to the efforts of our Digital Transformation team, patients at Geisinger Jersey Shore Hospital, Geisinger Medical Clinic Lock Haven and Geisinger Women's

Health in Lewisburg can now sign up for biometric identification.

Once enrolled, patients check in for their appointments by stating their name and having their photo taken. No other information is discussed, which means their privacy is protected while the technology matches their image to their medical record behind the scenes.

The Wayne Memorial website now features Neighborly

The Neighborly search widget makes free and reduced-cost programs and services easy to find in the communities Wayne Memorial serves. Kudos to our Health and Wellness team for their part in making it happen.

[Try Neighborly for yourself](#)



Take Five with Emily LaFeir

Emily LaFeir, senior director of operations for SIHI, talks about how automation and AI can catalyze innovation in hospital operations and enhance the patient experience in an AHA Center for Health Innovation's Take Five podcast.

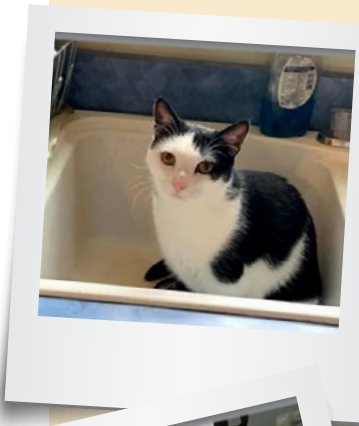


[Listen here](#)

Innovations pets of the quarter

Just for fun every quarter, we'll highlight our furry, feathery and scaly friends.

Send your photos and pet information to steeleinnovation@geisinger.edu and maybe your friend will be featured.



Alicia Trelease, Fresh Food Farmacy program manager's furry family of five. Aren't they adorable?

Oreo



Tiger



Tina



Howdy and Luna

Geisinger